

## ① What's in the box



NVR



12V 2A Power Supply



USB Mouse



Ethernet Cable (1m)



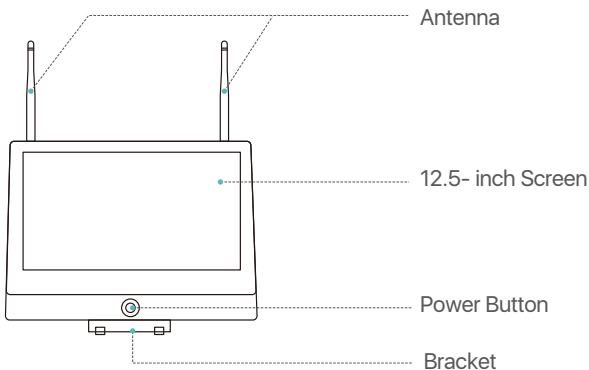
HDMI Cable



Quick Start Guide

Note: Products and accessories vary by product models, please refer to the actual product.

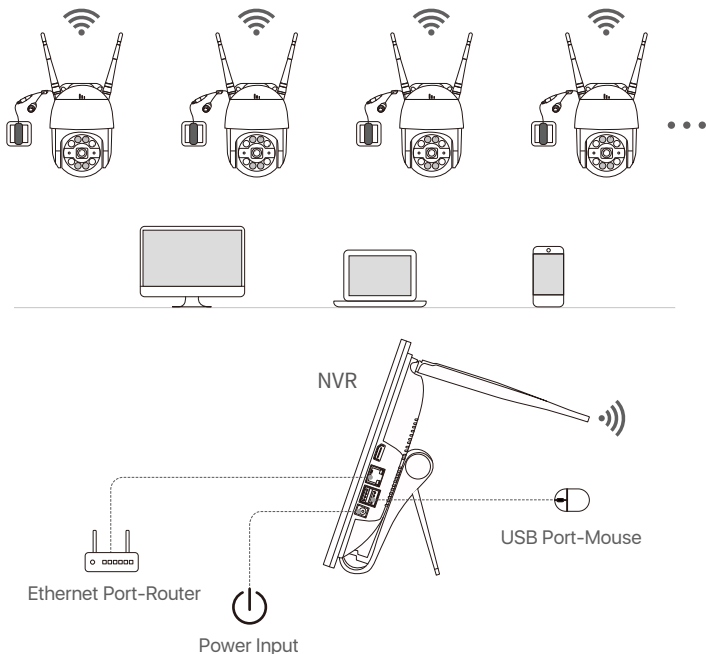
## ② Introduce the NVR



NOTE: The actual appearance and components may vary with different products, please refer to the actual product.

### 3 Connection Diagram

- (1) Connect NVR to router using a network cable.
- (2) Connect monitor to the NVR via the HDMI port.
- (3) Connect USB mouse to the USB port on the side panel of NVR.
- (4) Connect NVR to 12V power supply.
- (5) After the system starts, connect IP camera to power supply, and the camera will be automatically paired and connected to the NVR (support 8 cameras max).
- (6) The monitor will show the real-time monitoring picture of the camera.



NOTE: To ensure the device works properly, it is recommended to power on the NVR first for testing before a final installation.

## 4 Access the System via Smartphone or PC

### 4.1. Smartphone

Search “Zosi Smart” in the App Store or use a browser to scan the QR code below, download and install the App and follow the instruction to register an account.



Zosi Smart



App(IOS/Android)



App video operation link

### 4.2. PC

Download path: Go to <https://www.zositech.com/app/>

## 5 System Settings

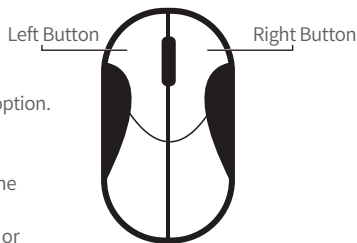
### 5.1. Mouse Operation:

Left Button:

- Preview or Playback Interface: Double-click a single channel to enter full screen and double-click to exit full screen.
- Navigation Menu: Left click to select a menu option.

Right Button:

- Right click to bring up the main menu when the mouse is on the preview interface.
- Navigation Menu: Right click to exit the menu or return to previous menu option.



## 5.2. Introduce the Menu Bar:

Right-click anywhere on the screen to open the menu bar.



- Single: Select single channel for live viewing
- Multi: Select multi-channel for live viewing
- Start Scan: Start/Stop Scan
- Colour: Adjust colour and image settings
- E-Zoom: E-Zoom the preview interface
- Audio: Adjust the camera volume
- Snap: Snap and save the live view images
- Stop Record: Start/Stop record
- Playback: Search video playback and quick playback
- Intelligent Alarm: Set up Human Detection and Siren-Light Alarm
- IPC Channel Configuration: IPC channel configuration management
- Main Menu: Enter the Main Menu

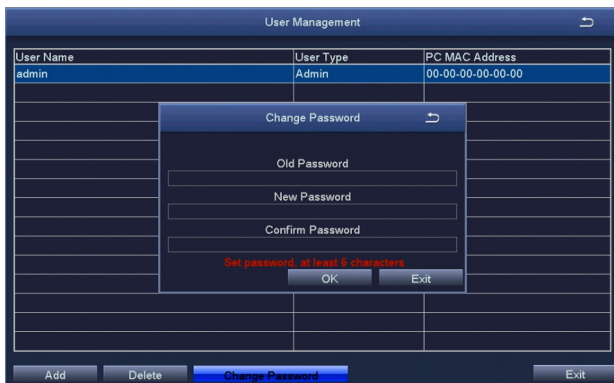
## 5.3. System Password:

The factory default username is “admin” and the password is empty, so the first time users can login the system directly.

A screenshot of a 'Login' dialog box. The title bar says 'Login' and has a close button on the right. Inside the dialog, there are two labels: 'User Name' and 'Password'. Below 'User Name' is a text input field containing the text 'admin'. Below 'Password' is an empty text input field. At the bottom of the dialog are two buttons: 'Login' and 'Cancel'.

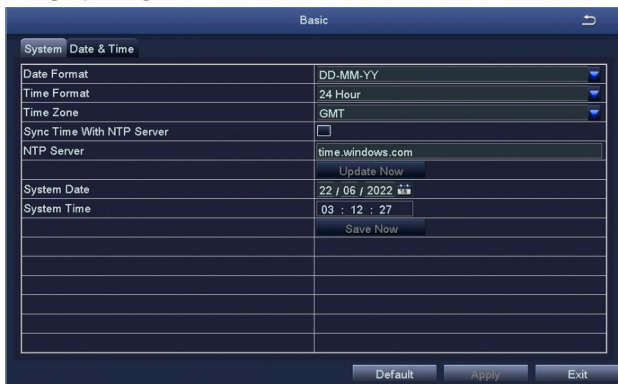


Change Password Path: Right click the mouse-Main Menu-Setup-Users-Change Password  
NOTE: The new password setting cannot be less than 6 characters, please keep the password properly.



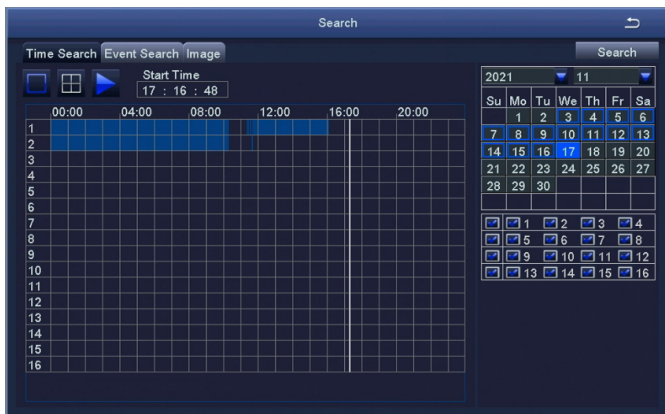
## 6 Date & Time Setting

Right click the mouse - Main Menu - Setup - Basic - Date & Time - Choose the corresponding time according to your region and then click “Apply” to save.  
NOTE: The default time zone is GMT, please choose the corresponding time according to your region.



## 7 Video Playback

Right click the mouse - Playback - Video Playback/Quick Playback,  
Video Playback: Playback the video clips via time search or event search.  
Quick Playback: Quick playback of the first 30 minutes of video.







The device interface would be slightly different from the interface in the video due to different devices. Follow the steps in the video to perform similar operations.

## 9 Usage Specification

- Use the camera only with compatible ZOSI NVRs.
- Read this guide carefully and keep it for future reference.
- Follow all instructions for safe use of the product and handle with care.
- Use the product within given temperature, humidity, voltage level noted in the device's specifications.
- Do not disassemble the product.
- Use only a regulated power supply with the product (optional). Use of a non-regulated, non-conforming power supply can damage the product and void the warranty.
- Periodic cleaning may be required. Use a damp cloth only. Do not use any harsh, chemical-based cleaners.
- Do not use the product in a sealed, humid environment. It is recommended to place it in a location that is easily ventilated for installation.
- Do not disassemble the device while power is on.

### **FCC Compliance Statement**

This device complies with Part 15 of FCC Rules.

Operation is subject to the following two conditions:

- (1) This device may not cause harmful interference.
- (2) This device must accept any interference received, including inference that may cause undesired operation.

### **Simplified EU Declaration of Conformity**

ZOSI declares that the device is in compliance with the essential requirements and other relevant provisions of Directive 2014/53/EU.



### **Correct Disposal of this Product**

This marking indicates that this product cannot be disposed with other household wastes throughout the EU. To prevent possible harm to the environment or human health from uncontrolled waste disposal and promote the sustainable reuse of material resources, please recycle it responsibly. To return your used device, please visit the Return and Collection System or contact the retailer from whom the product was purchased. They can take this product away for environmentally safe recycling.