

## 1 Package Content



NVR



12V 2A Power Supply



USB Mouse



Ethernet Cable (1m)



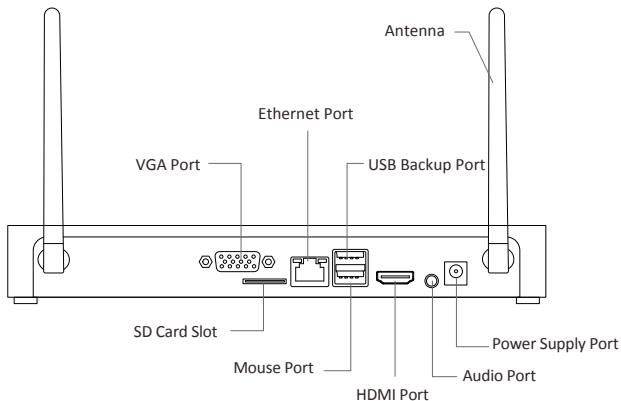
HDMI Cable



Quick Start Guide

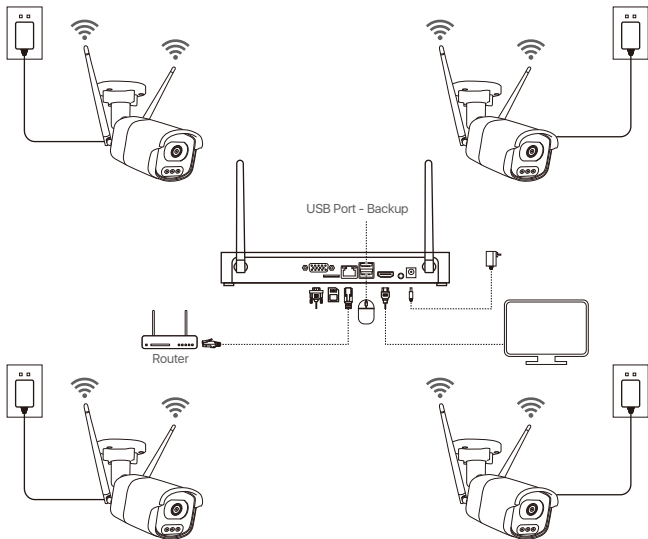
Note: The product and accessories vary according to different models, please prevail in kind.

## 2 Product Structure



Note: The actual product appearance varies with different models, please prevail in kind.

### 3 Connection Diagram



- ① Connect the NVR to Router with an Ethernet cable
- ② Connect Monitor to the NVR with HDMI, or VGA Port (VGA cable is not included)
- ③ Plug the Mouse to the USB port
- ④ Connect the NVR to a power source (12V 2A power adapter)
- ⑤ After the system starts, power on the IP camera and wait for the camera to be paired and connected with the NVR (8 channels at most).
- ⑥ The monitor will display the real-time monitoring image of the camera

Note: The picture is for reference only, please prevail in kind. Before installation, please power on to test the product.

## 4 Access the NVR from your smartphone or PC

### 4.1. View on Smartphone

Search Zosi Smart in App store or scan the QR Code to download the App. Follow the prompts to install, register and log in to the APP. When configuring and using the device, please update the APP to the latest.



Zosi Smart



App(IOS/Android)



App video operation link

Note: During APP installation and use, please allow the APP to obtain all required permissions; otherwise, device network configuration fails to be added.

### 4.2. View on PC Client

Please download AVSS Client in <https://www.zositech.com/app/>.

## 5 System Setting

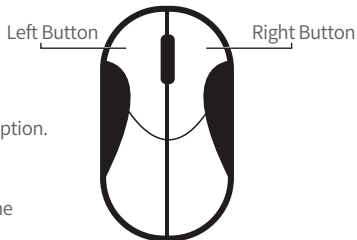
### 5.1. Mouse Use:

Left Button:

- When the monitor displays live and playback images in split screens, Double-click a split screen to make it full, and double-click again to return to the split screen.
- When navigating the menu, Click to open an option.














Right Button:

- On the live preview screen, click to bring up the main menu.
- When navigating the menu, Click to exit the menu or return to the previous one.



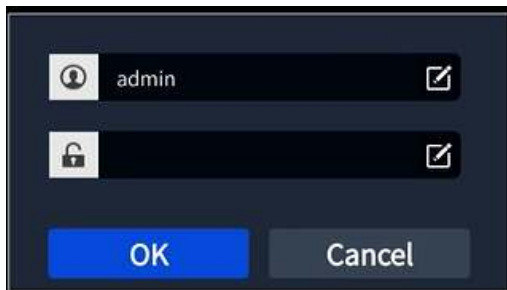
## 5.2. Menu Introduction:

Right-click anywhere on the live view screen to open the menu.

 Single	>	• Select single screen for live preview
 Multi	>	• Select multi-screen for live preview
 Start Scan		• Start/stop a live preview of the scan
 Colour		• Set the colour of the camera image
 E-Zoom		• Zoom in the live preview screen
 Audio		• Set the volume of the camera
 PTZ		• Control the rotation of the PTZ camera
 Snap		• Capture and save the live preview screen
 Stop Record		• Start/stop full-time record
 Time Playback		• Query and play back the videos/play back quickly
 Intelligent Detect	>	• Set up intelligent detection and light & siren alarm
 IPC Channel Config		• IPC channel config management
 Main Menu		• Open the main menu

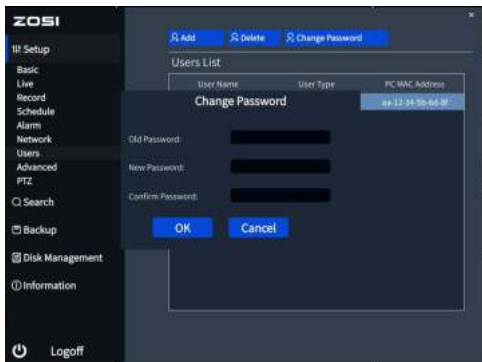
## 5.3. System password

The default user name is admin and the default password is blank. You can directly log in to the system for the first time with power on.



Password change path: Right click the mouse > go to Main Menu > Config Management > User Management > Change Password.

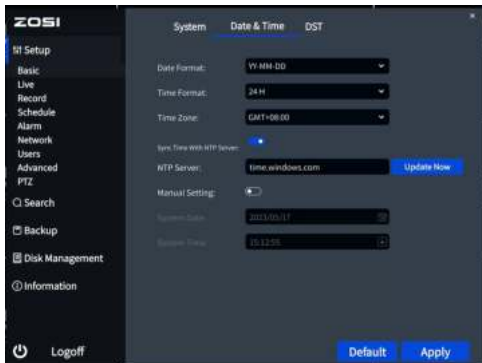
Note: The new password cannot be less than 6 characters. Please keep it safe.



## 6 System Time Setting

Right click the mouse > go to Main Menu > Config Management > Basic Config > Date and Time > Select the appropriate time zone based on your location, and click Apply.

Note: GMT is the default time zone. Please select the time zone based on your location.



## 7 Video Playback

Right click the mouse > Video Playback, you can choose Video Playback/Quick Playback.

Video Playback: Search the video you want via Time or Event, then play it.

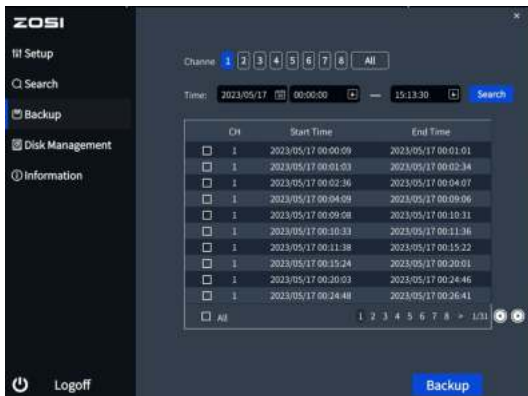
Quick Playback: You can quickly play back the previous 30 minutes of the video.



## 8 Video Backup

① Plug a USB flash drive into the USB port of the NVR.

② Right click the mouse > go to Main Menu > Data Backup > Select the channel and time period > Search > Select the video clip you want to back up > Click “Backup” .



## 9 Usage Specification

- Use the camera only with compatible ZOSI NVRs.
- Read this guide carefully and keep it for future reference.
- Follow all instructions for safe use of the product and handle with care.
- Use the product within given temperature, humidity, voltage level noted in the device's specifications.
- Do not disassemble the product.
- Use only a regulated power supply with the product (optional). Use of a non-regulated, non-conforming power supply can damage the product and void the warranty.
- Periodic cleaning may be required. Use a damp cloth only. Do not use any harsh, chemical-based cleaners.
- Do not use the product in a sealed, humid environment. It is recommended to place it in a location that is easily ventilated for installation.
- Do not disassemble the device while power is on.

## 10 FAQ

### **Q: No Video Output on the Monitor?**

- Ensure the lowest resolution of the monitor is no less than 720p.
- Ensure the NVR is powered on normally.
- Check the connection of the HDMI/VGA cable or use another cable to try again.

### **Q: Failed to Remotely Access the Camera via Mobile Phone or Computer?**

- Ensure the NVR is connected to the network normally, you can go to the NVR Menu-Network-Test.
- Test and verify whether you can access the Internet by connecting your phone or computer to the same network as the NVR.
- Reboot your NVR or router.

### **Q: Does the system support motion detection and image capture?**

- It captures images automatically when people, cars, are detected or when there is a change in detected images. Users can also manually capture images using our ZOSI Smart APP.

### **FCC Compliance Statement**

This device complies with Part 15 of FCC Rules.

Operation is subject to the following two conditions:

- (1) This device may not cause harmful interference.
- (2) This device must accept any interference received, including interference that may cause undesired operation.

### **Simplified EU Declaration of Conformity**

ZOSI declares that the device is in compliance with the essential requirements and other relevant provisions of Directive 2014/53/EU.



### **Correct Disposal of this Product**

This marking indicates that this product cannot be disposed with other household wastes throughout the EU. To prevent possible harm to the environment or human health from uncontrolled waste disposal and promote the sustainable reuse of material resources, please recycle it responsibly. To return your used device, please visit the Return and Collection System or contact the retailer from whom the product was purchased. They can take this product away for environmentally safe recycling.