

# What's in the Box



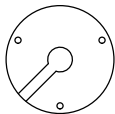
Camera



Waterproof Lid



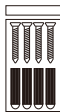
Power Adapter



Mounting Templates



Warning Stickers



Mounting Screws



Quick Start Guide



Antenna

NOTE: The number of accessories varies with the camera model you purchased.

# Camera Introduction

Micro SD Card Slot

Speaker

Built-in Microphone

Lens

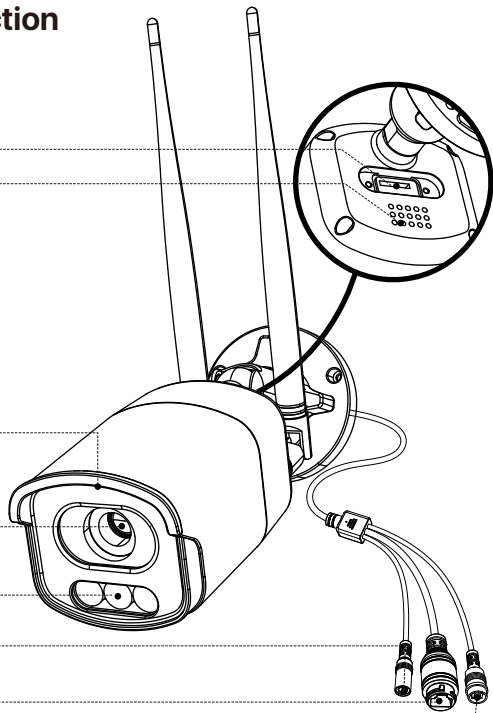
Warm Lights

Power Port

Network Cable

Reset

(Press and hold for 5 seconds to reset the camera to factory settings.)



# App Installation

1. Scan the QR code below to download free Zosi Smart App on your phone. (Both Android and Apple systems can scan to download, and also can search and download in App Store or Google Store.)



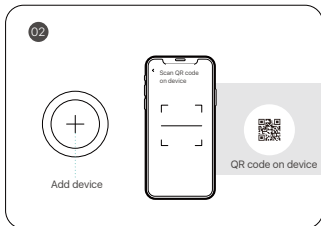
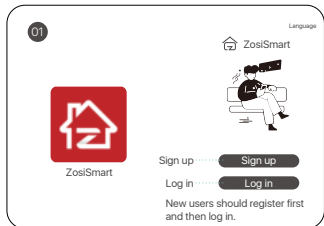
Zosi Smart



Android/IOS

## Add Device

1. Open Zosi Smart App and follow the prompts to register and log in.
2. Tap "+" to add a device. Follow the in-app instructions to complete the network settings and addition of the device.



# Install the Camera

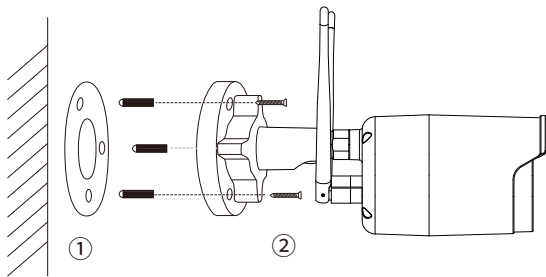
## Installation Precautions

- Do not face the camera to any light source.
- Do not point the camera at glass windows or reflective objects. Otherwise, it may result in poor image performance due to reflections from infrared LEDs, ambient lights or status lights.
- Do not mount the camera in shaded area, and point the camera towards a well-lit area. For better image quality, make sure the camera and the captured subject are at the same lighting conditions.
- It is recommended that the camera be installed as far away as possible from electronic devices such as microwaves, televisions, radio phones and baby monitors to prevent signal interference.
- It is recommended to clean the lens with a soft cloth from time to time.
- Do not expose the power port to water or moisture, or blocked by dirt or other things.
- Do not install the camera where rain and snow may hit the lens directly.
- Camera may work in extremely cold conditions as low as  $-10^{\circ}\text{C}$  as it will produce heat when powered on. You may power the camera indoors for a few minutes before installing it outdoors. (Only for outdoor cameras)

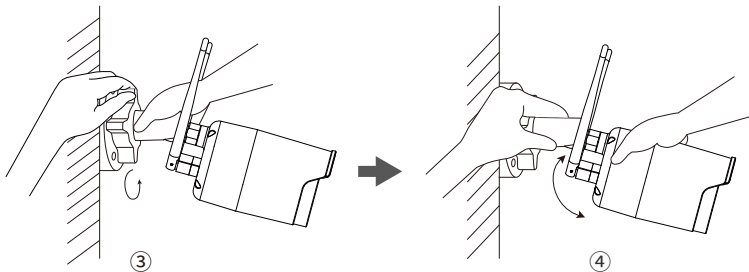
# Mount the Camera to the Wall

1. Drill holes according to the mounting template.

NOTE: Use the anchors included in the package if needed.



2. Attach the camera bracket with screws included in the package.  
NOTE: Run the cables through the cable notch on the mounting base.
3. Loosen the knob and adjust the camera to a proper angle.
4. Twist the knob to secure the camera in place.

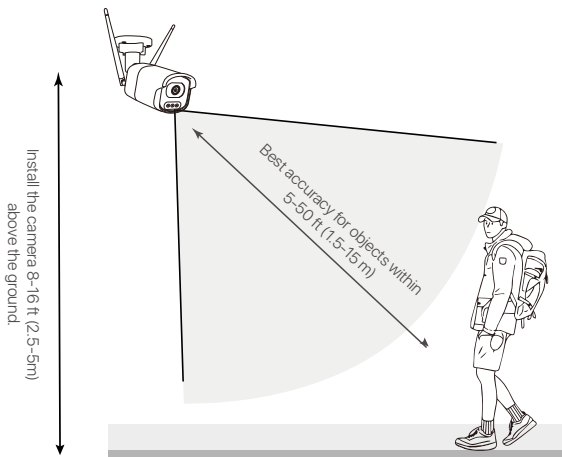


# Installation Distance, Height and Angle

Distance: Best accuracy for objects within 5-50 ft (1.5-15 m).

Angle: Tilt the camera down about 30°-60° from the horizontal position.

Height: Install the camera 8-16 ft (2.5-5m) above the ground.



NOTE: The accuracy of human detection will be affected by various factors, such as the distance between the person and the camera, the height of the person, the height and angle of the camera, etc. The accuracy and distance of detection will also be affected in the night vision environment.

# FAQ

## **Q: Why is the device offline?**

A: Please check whether the device is connected to the network and whether the router is functioning properly for internet access. Also, ensure that the router is enabled to automatically obtain an IP address.

## **Q: Image's Not Clear?**

- Check if there is dirt, dust, or other debris on the camera lens, and clean the lens with a soft, clean cloth.
- Check if there is dirt, dust, or other debris on the camera lens, and clean the lens with a soft, clean cloth.
- Update the camera firmware to the latest version.
- Reset the camera to factory settings and try again.

## **Q: Spotlights' Not Turning On?**

If the spotlights on your camera are not turning on, please try the following solutions:

- Ensure that the spotlights are enabled through the Zosi Smart App/Client on the device settings page.
- Update the camera firmware to the latest version.
- Reset the camera to factory settings and check the spotlight settings again.

## **Q: Does the Camera Support Motion Detection and Image Capture?**

- The camera automatically captures images when it detects people, cars, or any changes in the detected image.
- Users can also manually capture images using the Zosi Smart App.

If the problem persists, please contact Zositech Support.

# Specifications

Dimensions	66x85x187mm
Weight	490g
Operating Temperature	-10°C to 55°C (14°F to 131°F)
Operating Humidity	10% - 90%
Ingress Protection Rating	IP66

For more specs, please visit <https://support.zositech.com>

## Notification of Compliance

### CE FCC Compliance Statement

This device complies with Part 15 of FCC Rules.

Operation is subject to the following two conditions:

- (1) This device may not cause harmful interference.
- (2) This device must accept any interference received, including interference that may cause undesired operation.

### Simplified EU Declaration of Conformity

ZOSI declares that the device is in compliance with the essential requirements and other relevant provisions of Directive 2014/30/EU.



### Correct Disposal of this Product

This marking indicates that this product cannot be disposed with other household wastes throughout the EU. To prevent possible harm to the environment or human health from uncontrolled waste disposal and promote the sustainable reuse of material resources, please recycle it responsibly. To return your used device, please visit the Return and Collection System or contact the retailer from whom the product was purchased. They can take this product away for environmentally safe recycling.



NOTE: This equipment has been tested and found to comply with the limits for a Class B digital device, pursuant to part 15 of the FCC Rules. These limits are designed to provide reasonable protection against harmful interference in a residential installation. This equipment generates, uses and can radiate radio frequency energy and, if not installed and used in accordance with the instructions, may cause harmful interference to radio communications. However, there is no guarantee that interference will not occur in a particular installation. If this equipment does cause harmful interference to radio or television reception, which can be determined by turning the equipment off and on, the user is encouraged to try to correct the interference by one or more of the following measures:

- Reorient or relocate the receiving antenna.
  - Increase the separation between the equipment and receiver.
  - Connect the equipment into an outlet on a circuit different from that to which the receiver is connected.
  - Consult the dealer or an experienced radio/TV technician for help
- Changes or modifications not expressly approved by the party responsible for compliance could void the user's authority to operate the equipment.

This device complies with Part 15 of the FCC Rules. Operation is subject to the following two conditions: (1) this device may not cause harmful interference, and (2) this device must accept any interference received, including interference that may cause undesired operation.

#### RF Exposure Warning Statements:

This equipment complies with FCC radiation exposure limits set forth for an uncontrolled environment. This equipment shall be installed and operated with minimum distance 20cm between the radiator & body.

This device contains licence-exempt transmitter(s)/receiver(s) that comply with Innovation, Science and Economic Development Canada's licence-exempt RSS(s). Operation is subject to the following two conditions:

- (1) This device may not cause interference.
- (2) This device must accept any interference, including interference that may cause undesired operation of the device.

L'émetteur/récepteur exempt de licence contenu dans le présent appareil est conforme aux CNR d'Innovation, Sciences et Développement économique Canada applicables aux appareils radio exempts de licence. L'exploitation est autorisée aux deux conditions suivantes :

- (1) L' appareil ne doit pas produire de brouillage;
- (2) L' appareil doit accepter tout brouillage radioélectrique subi, même si le brouillage est susceptible d' en compromettre le fonctionnement.

#### Radio Frequency Exposure Statement for IC

This equipment complies with IC exposure limits set forth for an uncontrolled environment. The device can be used in portable exposure conditions. This equipment shall be installed and operated with minimum distance 20cm between the radiator & body.

Cet équipement est conforme aux limites d'exposition IC établies pour un environnement non contrôlé. L'appareil peut être utilisé dans des conditions d'exposition portables. Cet équipement doit être installé et utilisé avec une distance minimale de 20 cm entre le radiateur et le corps.