

1 What's in the box



NVR



NVR Power Adapter



USB Mouse



3ft(1m) Ethernet Cable



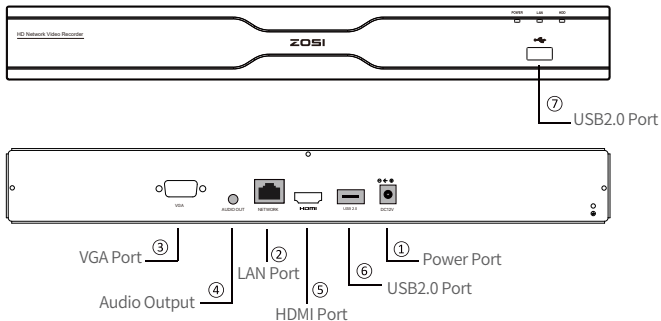
HDMI Cable



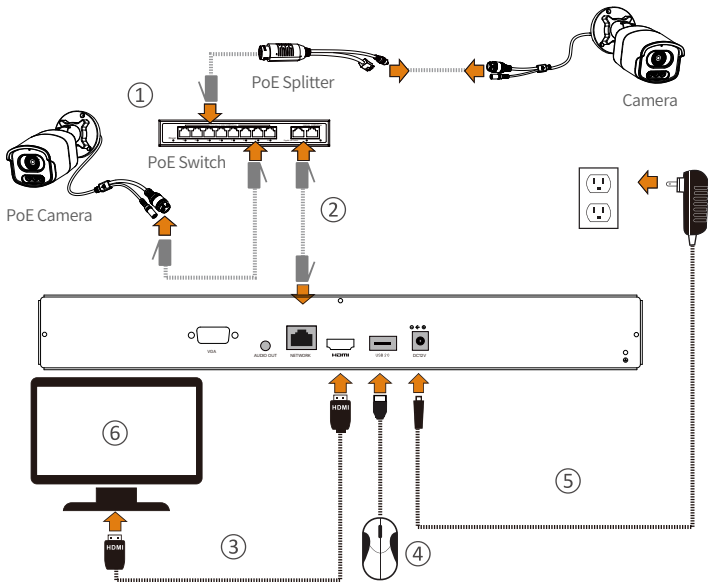
Quick Start Guide

NOTE: Products and accessories vary by product models, please refer to the actual product.

2 Introduce the NVR



NOTE: The actual appearance and components may vary with different products, please refer to the actual product.



1. Connect the NVR network port to the PoE switch LAN port using an Ethernet cable.
2. Connect the PoE network port of the PoE splitter to the PoE camera or PoE splitter + camera using an Ethernet cable.
3. Connect the NVR to the Monitor with VGA or HDMI Cable.
4. Connect the USB Mouse to the USB2.0 Port.
5. Connect the NVR to the Power Outlet.
6. The monitor will display live view of the camera.

NOTE: To ensure the device works properly, it is recommended to power on the NVR first for testing before a final installation.

3 Access the System via Smartphone or PC

3.1. Smartphone

Search “Zosi Smart” in the APP Store or use a browser to scan the QR code below, download and install the app and follow the instructions to register an account.



Zosi Smart



App (IOS/Android)



App video operation link

3.2. PC

Download path: Go to <https://www.zositech.com/pages/app>.

4 Set up the NVR System

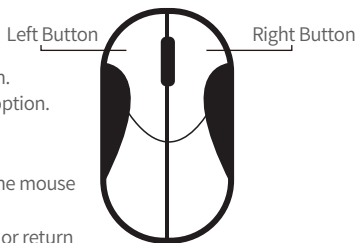
4.1. Mouse Operation:

Left Button:

- Preview or Playback Interface: Double-click a single channel to enter full screen and double-click again to exit full screen.
- Navigation Menu: Left click to select a menu option.











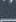
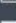

Right Button:

- Right click to bring up the main menu when the mouse is on the preview interface.
- Navigation Menu: Right click to exit the menu or return to previous menu option.



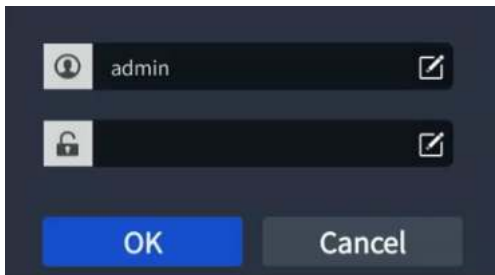
4.2. Introduce the Menu Bar:

Right-click anywhere on the screen to open the menu bar.

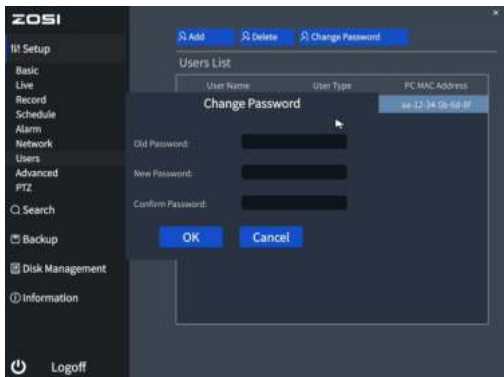
 Single	>	• Single - Select single channel for live viewing
 Multi	>	• Multi - Select multi-channel for live viewing
 Start Scan		• Start Scan - Start/Stop Scan
 Colour		• Colour - Adjust colour and image settings
 E-Zoom		• E-Zoom - E-Zoom the preview interface
 Audio		• Audio - Adjust the camera volume
 PTZ		• PTZ: Control the rotation of PTZ camera
 Snap		• Snap - Snap and save the live view images
 Stop Record		• Stop Record - Start/stop record
 Playback	>	• Playback - Search Video playback and quick playback
 Intelligent Detect	>	• Intelligent Alarm - Set up Human Detection and Siren-Light Alarm
 IPC Channel Config		• IPC Channel Configuration - IPC channel configuration management
 Main Menu		• Main Menu - Enter the Main Menu

4.3. System Password:

The factory default username is “admin” and the password is empty, so the first time users can login the system directly.

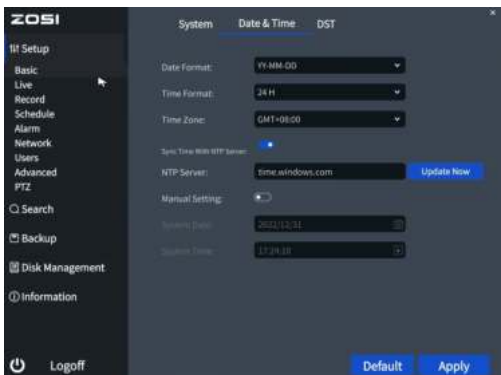


Change Password Path: Right click the mouse-Main Menu-Setup-Users-Change Password
NOTE: The new password setting cannot be less than 6 characters, please keep the password properly.



5 Date & Time Setting

Right click the mouse - Main Menu - Setup - Basic - Date & Time - Choose the corresponding time according to your region and then click “Apply” to save.
NOTE: The default time zone is GMT, please choose the corresponding time according to your region.



6 Video Playback

Right click on mouse - Playback - Time /Event

Time playback: View playback video based on time search

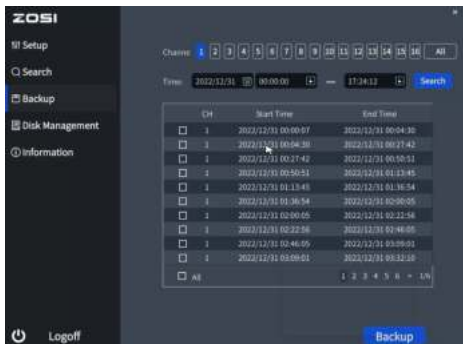
Event playback: View playback video based on event search



7 Backup

① Insert a USB into the USB 2.0 port on the PoE NVR.

② Right click the mouse > Main Menu > Backup > Select channels and time period > Search > Select the video clips you want to back up > Click “Apply” .



For more information about the system operation settings, please visit: <https://bit.ly/3zQsdIv>.

8 Usage Specification

- Use the camera only with compatible ZOSI NVRs.
- Read this guide carefully and keep it for future reference.
- Follow all instructions for safe use of the product and handle with care.
- Use the product within given temperature, humidity, voltage level noted in the device's specifications.
- Do not disassemble the product.
- Use only a regulated power supply with the product (optional). Use of a non-regulated, non-conforming power supply can damage the product and void the warranty.
- Periodic cleaning may be required. Use a damp cloth only. Do not use any harsh, chemical-based cleaners.
- Do not use the product in a sealed, humid environment. It is recommended to place it in a location that is easily ventilated for installation.
- Do not disassemble the device while power is on.

9 FAQ

Q: No Video Output on the Monitor?

- Ensure the lowest resolution of the monitor is no less than 720p.
- Ensure the NVR is powered on normally.
- Check the connection of the HDMI/VGA cable or use another cable to try again.

Q: Failed to Remotely Access the Camera via Mobile Phone or Computer?

- Ensure the NVR is connected to the network normally, you can go to the NVR Menu-Network-Test
- Test and verify whether you can access the Internet by connecting your phone or computer to the same network as the NVR.
- Reboot your NVR or router.

Q: Does the system support motion detection and image capture?

- It captures images automatically when people, cars, are detected or when there is a change in detected images. Users can also manually capture images using our ZOSI Smart APP.

10 Notification of Compliance

FCC Compliance Statement

This device complies with Part 15 of FCC Rules.

Operation is subject to the following two conditions:

- (1) This device may not cause harmful interference.
- (2) This device must accept any interference received, including interference that may cause undesired operation.

Simplified EU Declaration of Conformity

ZOSI declares that the device is in compliance with the essential requirements and other relevant provisions of Directive 2014/53/EU.



Correct Disposal of this Product

This marking indicates that this product cannot be disposed with other household wastes throughout the EU. To prevent possible harm to the environment or human health from uncontrolled waste disposal and promote the sustainable reuse of material resources, please recycle it responsibly. To return your used device, please visit the Return and Collection System or contact the retailer from whom the product was purchased. They can take this product away for environmentally safe recycling.

NOTE: This equipment has been tested and found to comply with the limits for a Class B digital device, pursuant to part 15 of the FCC Rules. These limits are designed to provide reasonable protection against harmful interference in a residential installation. This equipment generates, uses and can radiate radio frequency energy and, if not installed and used in accordance with the instructions, may cause harmful interference to radio communications. However, there is no guarantee that interference will not occur in a particular installation. If this equipment does cause harmful interference to radio or television reception, which can be determined by turning the equipment off and on, the user is encouraged to try to correct the interference by one or more of the following measures:

- Reorient or relocate the receiving antenna.
- Increase the separation between the equipment and receiver.
- Connect the equipment into an outlet on a circuit different from that to which the receiver is connected.
- Consult the dealer or an experienced radio/TV technician for help

Changes or modifications not expressly approved by the party responsible for compliance could void the user's authority to operate the equipment.

This device complies with Part 15 of the FCC Rules. Operation is subject to the following two conditions:

(1) this device may not cause harmful interference, and (2) this device must accept any interference received, including interference that may cause undesired operation.

RF Exposure Warning Statements:

This equipment complies with FCC radiation exposure limits set forth for an uncontrolled environment. This equipment shall be installed and operated with minimum distance 20cm between the radiator & body.

This device contains licence-exempt transmitter(s)/receiver(s) that comply with Innovation, Science and Economic Development Canada's licence-exempt RSS(s). Operation is subject to the following two conditions:

- (1) This device may not cause interference.
- (2) This device must accept any interference, including interference that may cause undesired operation of the device.

L'émetteur/récepteur exempt de licence contenu dans le présent appareil est conforme aux CNR d'Innovation, Sciences et Développement économique Canada applicables aux appareils radio exempts de licence. L'exploitation est autorisée aux deux conditions suivantes :

- (1) L' appareil ne doit pas produire de brouillage;
- (2) L' appareil doit accepter tout brouillage radioélectrique subi, même si le brouillage est susceptible d' en compromettre le fonctionnement.

Radio Frequency Exposure Statement for IC

This equipment complies with IC exposure limits set forth for an uncontrolled environment. The device can be used in portable exposure conditions. This equipment shall be installed and operated with minimum distance 20cm between the radiator & body.

Cet équipement est conforme aux limites d'exposition IC établies pour un environnement non contrôlé. L'appareil peut être utilisé dans des conditions d'exposition portables. Cet équipement doit être installé et utilisé avec une distance minimale de 20 cm entre le radiateur et le corps.