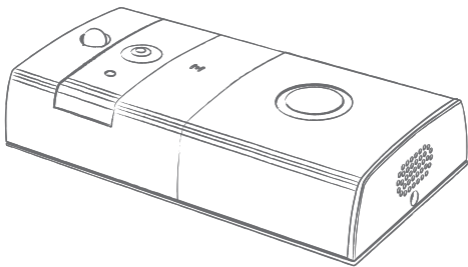


ZOSI

PROFESSIONAL SECURITY MADE EASY

Low Power Wireless Video Doorbell Manual



Operation Video Frequency Demonstration

Installation: <http://t.cn/RHuZhrT>

Mobile Connection: <http://t.cn/RHuzWcP>

For more information of your new system, please refer to www.zositech.com

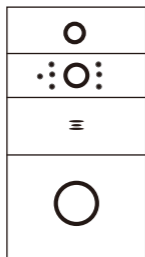
Contents

1. Video Doorbell Packing List.....	1
2. Video Doorbell Introduction.....	1
2.1 Appearance Introduction.....	1
2.2 Installation Guide.....	3
2.3 Specification.....	4
2.4 Main Management Functions of Software.....	5
3. Software Download.....	6
3.1 Network Configuration.....	7
3.2 Add New Devices.....	11
3.3 App Menu Introduction.....	12
3.4 App Main Page Introduction.....	13
3.5 App Monitoring Functions.....	14
3.5.1 Volume.....	14
3.5.2 Playback.....	14
3.5.3 Scene mode.....	15
3.5.4 Full screen.....	15
3.5.5 Screen shot.....	16
3.5.6 Speak.....	16
3.5.7 Video record.....	16
3.6 App User Management Functions.....	16
3.6.1 Add verified users/ QR code share.....	17
3.6.2 Delete verified users.....	18

3.7 App Device Management Function.....	19
3.7.1 Ultra Low Power Consumption / Device Indicator Light / Night Vision Infrared Light configuration.....	20
3.7.2 Video Length Setting.....	21
3.7.3 Motion Detection Sensitivity configuration.....	22
3.7.4 Ring and Intercom Volume setting.....	23
3.7.5 Format TF Card.....	24
3.7.6 Device Information.....	24
3.8 Message Receiving and Pushing.....	25
3.8.1 Doorbell call pushing.....	25
3.8.2 PIR mobile detection pushing.....	26
3.9 Upgrade Operation.....	26
3.10 Modify The Time Zone.....	27
3.11 Message Page Description of System.....	27
3.12 File Page Description.....	27
3.13 Help Page Description.....	29
3.14 General Page Description of System.....	30

1. Video Doorbell Packing List

Upon receipt of the package, please check as below:



Video DoorBell



Built-in 2*18650
Rechargeable Batteries



User Manual



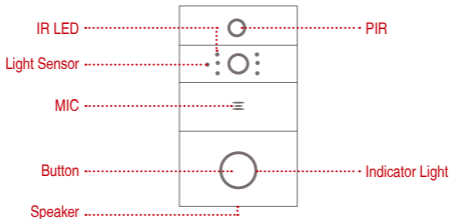
Built-in 8GB TF Card



Screw Package

2. Video Doorbell Introduction

2.1 Appearance Introduction



IR LED: The IR LED can improve luminance in low light and nighttime.

Light Sensor: A light sensor designed to detect ambient lighting conditions automatically, ensuring accurate color reproduction in all lighting conditions.

MIC: Audio capture.

Button: Doorbell button.

PIR: It will push alarm to your phone directly right away when someone trigger the built-in motion sensors, which may detect the scope from 0 to 5 meters in front of the doorbell

Lens: Video image capture

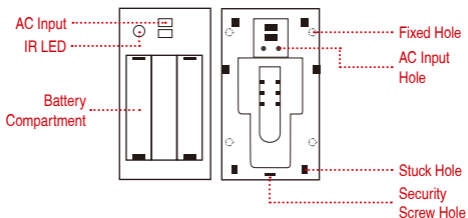
Indicator Light:

The red light flash slowly: The doorbell is waiting for network configuration.

The blue light flash slowly: The doorbell is connecting to the live view.

The red light and blue light flash alternately: Wi-Fi connection fails.

Speaker: Play sound and voice intercom.



AC Input Hole: Used to connect it to your existing doorbell wiring for a non-stop charge. (AC 8~24V)

Reset Button: Long press Reset Button for about 5 seconds to restore manufacturer default setting.

Battery Compartment: Requires 2 x 18650 batteries. (Included)

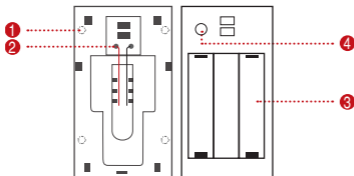
Fixed Hole: Mounting holes for fixing.

Stuck Hole: Mounting the equipment onto the bracket.

How to take apart the baseboard:**Downward-push it.**

Security Screw Hole: Mounting the security screw to prevent the doorbell being looted.

2.2 Installation Guide



- ① Use the screws provided to fix the bracket on the wall.
- ② Connect the external power cord to the AC external power supply hole. (Additionally, you can also choose batteries to charge it.) (AC 8~24V)
- ③ Install two 18650 batteries. (Included)
- ④ Press the reset button for 5 seconds, and wait for the indicator light turn to red. (The equipment should be in working status after the light turn to red.)

Tips: Cover the battery cover. Align the device and the bracket. Tighten security screws to complete the installation.

2.3 Specification

Low-power consumption intelligent security solutions-Video doorbell provide the following features: wireless connection, ultra-low power consumption, remote active doorbell, quick start.

Note: Two 18650 batteries (total 6800 mAh) can work for 8-12 months if device be activated for 15 minutes per day.

Sensor	1/4 CMOS
Resolution	1280*720
Lens Angle	166°
IR LED	6X850mm 5 meters at night
Wi-Fi	IEEE 802.11 b/g/n
Audio	Two-way talking with noise cancellation
Recording	TF card recording
Storage	8G / 16G / 32G (8G TF card included)
Battery	2x18650 batteries (included)
Monitoring	Device Button, Motion Detection, Remote Live View
Device wake-up time	Within 600 ms
Notification	Send notifications within 1 second
Power Consumption	250uA in standby mode, 170mA in working mode

2.4 Main Management Functions of Software

Video doorbell device management functions include adding doorbell, removing doorbell. This software can manage 18 video doorbells simultaneously.

You can configure the video doorbell Wi-Fi network via software.

Receive messages from the visual doorbell, including device on-line push messages, doorbell calling push messages, motion detection (PIR) push messages, and manage push messages.

Support to remote wake-up mobile phone within 1 second for real-time video and talking, taking photos, recording video etc in TF card through App.

Set the functions of the visual doorbell, including automatic video recording setting, indicator light setting, the motion detection sensitivity setting, the night vision photosensitive sensitivity setting, the device ultra low power consumption setting, the bell volume setting, the intercom volume setting, the video scene mode setting, doorbell SD card capacity check, format SD card, doorbell software upgrading, device time zone setting.

Support the following system version:

Android: Android 4.2 or above.

iOS: iOS 9.0 or above.

3. Software Download

Search “ToSee” on Google Play or iOS App store. Download, install and open software.(For the better user experience, please allow all notification permissions to get notifications.)



Tips:The following operation takes iOS as example.

(The user interface between Android and iOS will be slightly different.)

Software introduction

After entering App,guide page will be displayed.

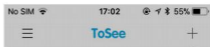
Click adding device button in the upper right corner.

There are two ways to add a device.

- 1.The device can be added when select or set network configuration at first time as an administrator.
- 2.Select and scan the QR code or a local QR code to add a device.



Please click the upper right corner '+' to add the device



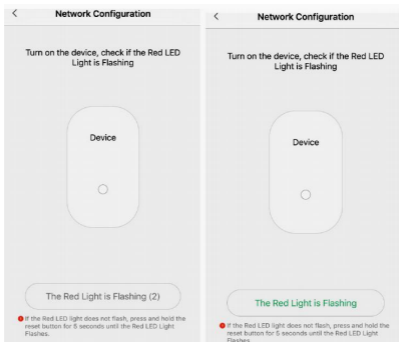
Please click the upper right corner '+' to add the device

3.1 Network Configuration

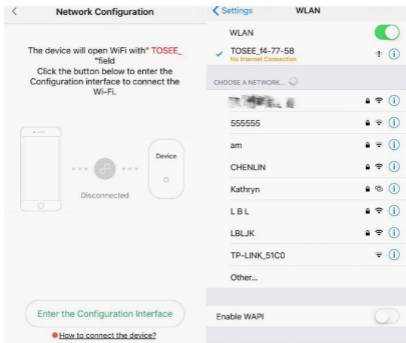
Choose **+** ADD Device .You can configure network for new device or reconfigure network for current device, and add device as an administrator.

Set up a Wi-Fi that can connect to the public network. The device will be connected under the configuration of this Wi-Fi.

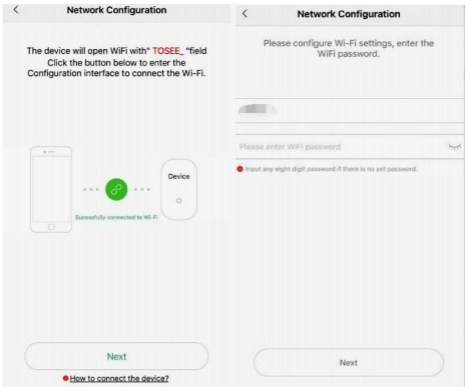
Before adding the device, please press the reset button for more than 5s. After the device being rebooted, enter the network configuration page. It's easy to check whether the device on the network configuration mode by observing the light status: the red light will flash every 1 second when the device on network configuration mode.



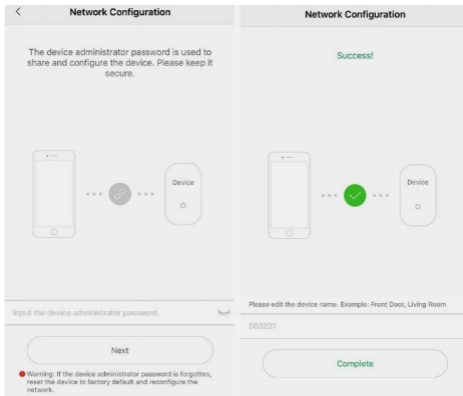
Wait 5s and then click: [Enter the Configuration Interface](#) to enter the network configuration page. Click [The Red Light is Flashing](#) to go to setting Wi-Fi page. Select the "TOSEE_" Wi-Fi, this Wi-Fi has no password on initial. After connecting Wi-Fi to device, go back ToSee App.



It means the mobile phone is successfully connected with the device when App Network Setting Configuration shows “Successfully connected to Wi-Fi”. Click “Next” . Enter the password of Wi-Fi and SSID, then click“Next”.



Input the device administrator password, and pay attention to the warning. Then click the “Next”. App will transmit the data to the device to complete the matching. Enter the name of device, and then click “Complete”.



Network configuration Indicator Status Introduction

The red light flashes every 1 second, which means the device stays in the AP network configuration mode.

Possible reasons :

- 1) the phone is not connected to Wi-Fi, and failed to complete the configuration.
- 2) Configured the wrong Wi-Fi account, the device failed to search the right Wi-Fi.

Recommendation: Reconfigure Wi-Fi account.

The red and blue lights flash one time alternately every 1 second, and the device will standby after 20 seconds. When activated, the light's status is unchanged, which means the device is offline.

Possible reasons: Enter the correct Wi-Fi account, but wrong Wi-Fi password.


Recommendation: Reconfigure Wi-Fi information.

Blue light flashes one time every 1 second, and the device standby after 20 seconds. When activated, the light's status unchanged, which means the device has been properly connected.

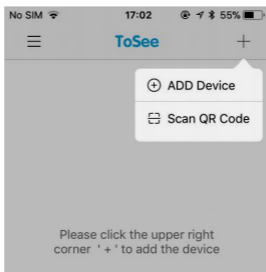
Note: During the networking of the device, the red light and blue light may flash alternately for some certain time. Then the blue light will be always flashing when the device is connected to internet.

3.2 Add New Devices

User can only add device by scanning the QR code that administrator shared to .


Choose  **Scan QR Code** You can add a device by scanning a QR code or a local picture of QR code.

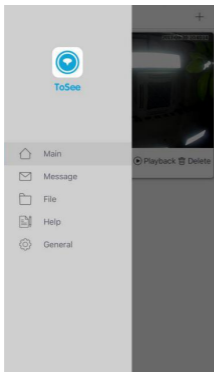
Place the QR code in the scan frame to automatically scan or click "album", and select the QR code on local picture.



If scan smoothly, you can see the indication of successful scan. Click "OK". Enter the device name and continue to click "OK" to complete the device adding. After that, you need to connect the device as soon as possible to be a certified user.

3.3 App Menu Introduction

Click the button  on the left corner to enter the menu page.

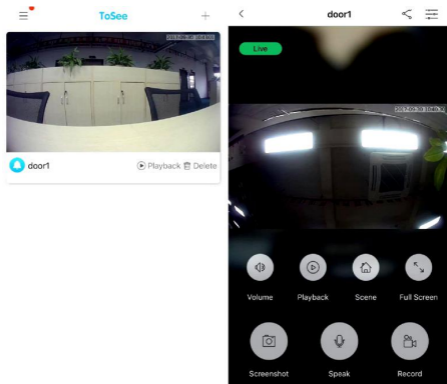


App Menu page has the following functions.

- 1) **Main page:** Equipment management.
- 2) **Message:** Push the message management.
- 3) **File:** Photos and local video management.
- 4) **Help:** Help for using App.
- 5) **General:** App settings management.

3.4 App Main Page Introduction

Enter the main page from the App menu page. You can manage Video doorbell device on the main page, including adding doorbells, deleting doorbells, and entering the device directly to view the video. This software can manage 18 video doorbells simultaneously.



Introduction for monitoring page

Connection status: The "connecting" "online" "connection failure" and other status prompts will show on the upper left corner.

Battery Power: The icon of battery status, such as low battery/charging/ full, will show on the right top. If no icon display, it means the battery is in normal status.

Volume: Turn off/down or turn on/up the sound of monitoring video.

Playback: Check the videos recorded in the SD card.

Scene: Select video scene mode.

Full screen: Cellphone can play the video at full screen.

Screenshots: Screenshot for the current video. View the screenshot image in the file.

Speak: Turn on or turn off the intercom function. The intercom volume can be adjusted in the setup management of the device.

Record: Cellphone can record the local video, you can view the local video in the file.

User management: Enter the user management interface, you can view / add / delete the certified users.

Device management: Enter the device management interface, you can start device management and configuration.

Description for other functions related to monitoring

Night vision photosensitive function: When the doorbell in the dark environment,IR CUT lens infrared filter will turn on,images will be changed from colorful to black & white.When the doorbell in the light environment ,IR CUT lens infrared filter will turn off,and the images will be changed to colorful from black & white.

Echo suppression: Echo suppression is supported.

3.5 App Monitoring Functions

3.5.1 Volume

Turns off or turns on the sound of the monitored video.

3.5.2 Playback

View the recorded video on the device TF card. In the video interface, you can choose different dates and different recording files to play.

3.5.3 Scene mode

Closed: Default setting.

Backlight compensation: Optimize light levels for clear image reproduction.


Infrared: In this scene, IR CUT filter and infrared light will turn on, and the video image will turn to black and white instead of colorful.

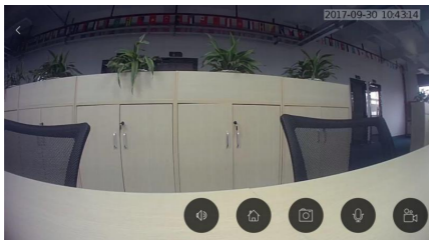
High Light Compensation: Apply for strong light environment. Effectively prevent the video images fuzzy from direct light shining, meanwhile, automatically distinguish strong spots and provide light compensation for strong areas near the bright spot to get a clearer image.

Motion Compensation: Accurately observe fast moving object. It can help to watch moving objects clearly.

Wide Dynamic Range: Apply to the situation with strong light. No matter on brighter or on darker environment, it can provide great visual effect.

3.5.4 Full screen

Click  on the monitor screen or put the phone in horizontal to access full screen mode . Click < to turn back to vertical screen mode.



3.5.5 Screen shot

Screenshot the current video image and the image can be searched on the file.



3.5.6 Speak

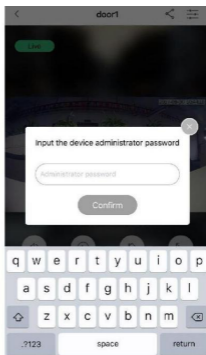
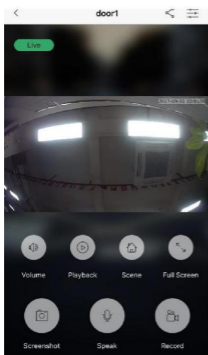
The volume can be adjusted on device setting.

3.5.7 Video record

Record the monitoring videos and check the videos on the file.



3.6 App User Management Functions

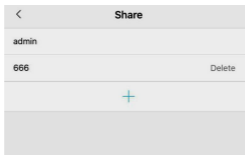
On the monitoring page, click  or  and input device password to get administrator identity. Only one pin required on each time connection, then you can enter into member manage or device manage page.



3.6.1 Add verified users/ QR code share

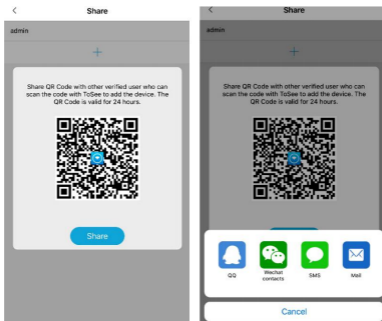
You can only add device by scanning QR code shared by administrator. Each doorbell can only add up to 5 Verified users.

Click  to enter the shared page of user management. Click , then input share user's ID, then share QR code created.




QR code can not only be shared to WeChat and QQ, but also forward by Email or SMS. New users can add device directly by scanning the QR code.

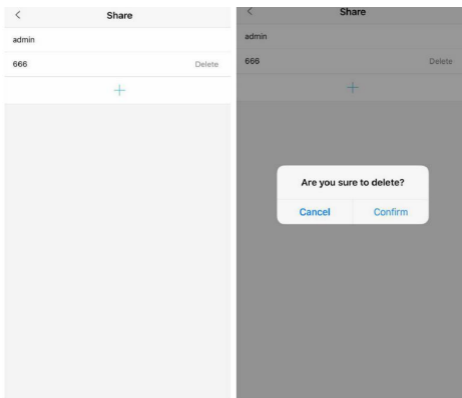
Please note, after adding the device, mobile phone users need to connect the device to become a verified user.





3.6.2 Delete verified users

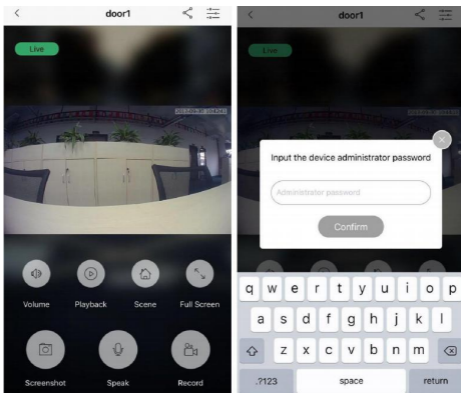
Choose  .The verified users that need to be deleted on user management page, and confirm delete. There will be a prompt if any unverified users try to connect device.

Except current phone and internet users , administrator also have permission to delete other verified users. The deleted users will switch to unverified users, it will pop-up a prompt if they connect device.

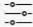



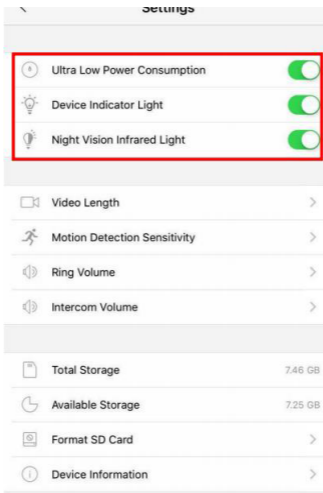
3.7 App Device Management Function

On the monitoring page, click  or  and input device password to get administrator identity. It required only one password on one connect, then you can enter into member manage or device manage.



3.7.1 Ultra Low Power Consumption / Device Indicator Light / Night Vision Infrared Light configuration

Enter Settings interface of the device  , toggle the switch  you can turn on / off the device the following settings:



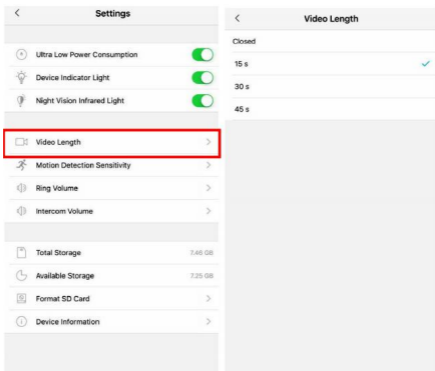
Ultra-low Power Consumption: Turn on the switch, the device is in ultra-low power 250uA mode of operation. Close the switch, the device is in normal power mode.

Device Indicator Light: Turn on the switch, the light around the button will light up as long as the device wake up. Turn off the switch, and the light around the button will light up only when the device is powered on , awakened up via keypad or the network is abnormal.

Night Vision Infrared Light: Turn on the switch, the device can trigger the photosensitive function (When the doorbell in the dark environment,IR CUT lens infrared filter will turn on,images will be changed from colorful to black & white.

When the doorbell in the light environment ,IR CUT lens infrared filter will turn off,and the images will be changed to colorful from black & white) Turn off the switch, the device cannot trigger the photosensitive function.

3.7.2 Video Length Setting



Video length:

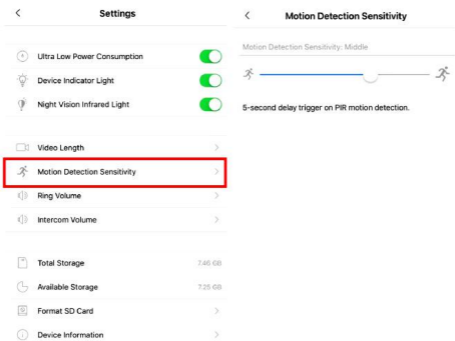
[Off / 15 s / 30 s / 45 s], default: 15 s.

Choose "15s" or "30s" or "45s" :The device will record 15s or 30s or 45s automatically after each wake-up.

Choose "Closed":The Device will not record.

3.7.3 Motion Detection Sensitivity configuration

You can move the slider to configure the sensitivity value.



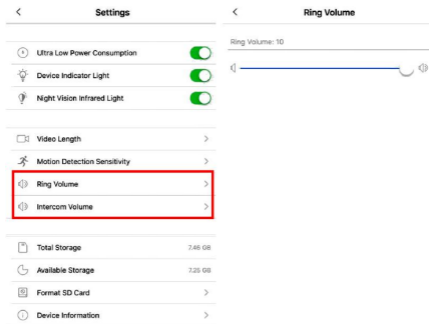
Motion Detection Sensitivity Configuration Value : [Off / Low / Medium / High].

PIR Trigger	Push	Alarm and record
Off	No	No
Low	Within 10s	Yes
Medium	Within 5s	Yes
High	Immediately	Yes

3.7.4 Ring and Intercom Volume setting

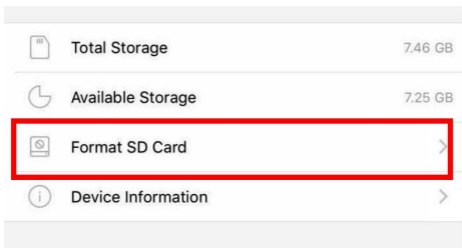
Move the slider to configure the ring volume value.

Move the slider to configure the intercom volume value.



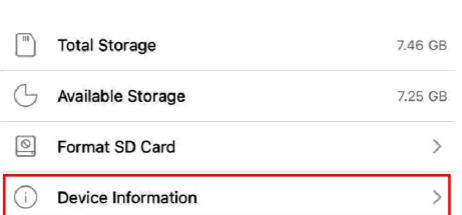
3.7.5 Format TF Card

Select "format SD card", click "OK", then TF card will be formatted.



3.7.6 Device Information

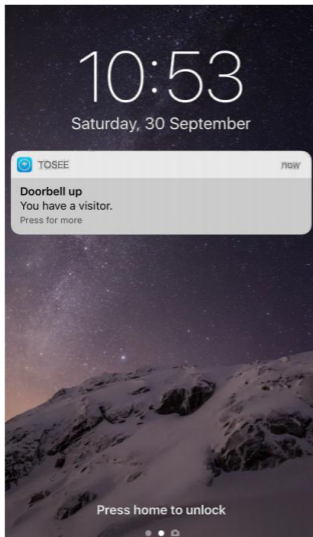
Select "Device Information", you can view the device information and modify the device name in this page.



3.8 Message Receiving and Pushing

3.8.1 Doorbell call pushing


The device will push ringing messages to your mobile phone when the doorbell is pressed. Then you can enter monitor interface directly by clicking the pushing message on your phone.



3.8.2 PIR mobile detection pushing

PIR Mobile Detection Push mode will be activated when someone appears or moves in front of the device. Your phone can be connected to this device directly when you click the push message.

3.9 Upgrade Operation

The doorbell firmware needs to be updated, or time zone need to be synchronize with the phone if a red dot appears on icon  that is located in the upper right corner of page.

Firmware version displays current firmware version number. It means the device need to be upgraded to a new firmware version when there is a “Upgrade” icon on right side of current firmware version number. Click “Upgrade” to update the firmware version.

Reminder: Please ensure the device is online and power on during upgrading. If suspend, please try again later.


Status Introduction During Device Upgrading:



- 1) When blue and red light flashes simultaneously every 1s, it means device is upgrading. Please make the device stay on electrified.
- 2) When blue light flashes every 1s, it means the upgrading is finished. Device can be connected to network to work.
- 3) When blue and red light flashes alternately every 1s which means the upgrading is finished, yet the network is disconnected.



3.10 Modify The Time Zone

Time Zone Modification means we can synchronize time of your phone to device if time on two devices are not consistent. Modifying the device time zone will affect the time display of relevant function such as monitoring, recording, etc. Click "Configuration" to synchronize the time zone.


3.11 Message Page Description of System

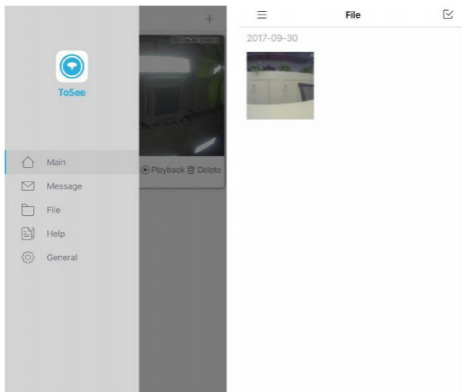
Enter App side slide menu page, select  Main to enter history push message management. If the device installed SD card, there is a "PLAY" reminder that you can click to watch the pushing video.



New push message reminder: If there is a red dot appear on , which means App has new push message. Enter App side slide menu page, click  Message to enter history push message management to clear all red dot reminders.

Click  to enter editing mode, tick  or click "check all", then click "delete" to delete history push messages.

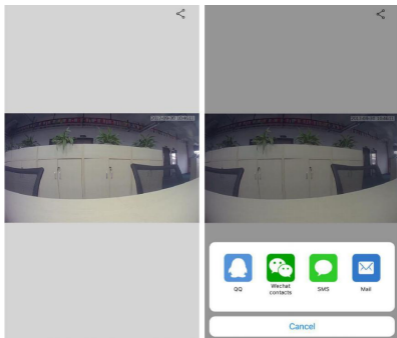
3.12 File Page Description

Enter App side slide menu page, select  File to enter file management. The local storage videos and screenshots can be checked by clicking the relevant video or screenshot.

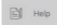


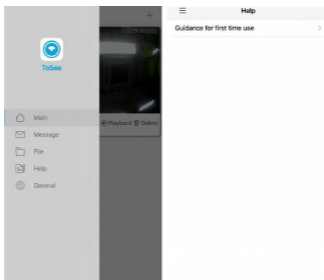
Click  to enter editing mode, tick  or click "check all", then click "delete" to delete picture or local storage video.

Click on video to play and click on image to view larger image. Click share icon in the top right corner can share photos or videos to your Wechat, QQ(only support image mode), can also share it with your friends via email or SMS(only support image mode).




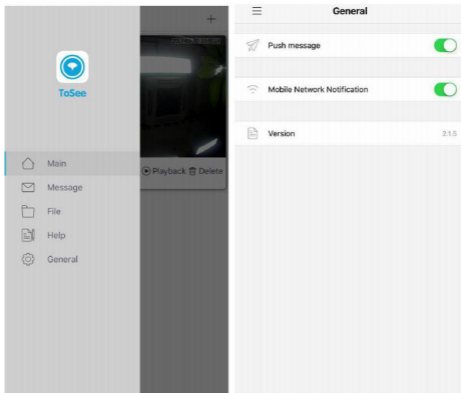
3.13 Help Page Description

Enter App side slide menu page, select  Help to enter Help page.



3.14 General Page Description of System

Enter App side slide menu page, select  General to enter App general setting page.



General Setting Instructions

Push Message: Receive push message or not.

Mobile Network Reminder: Remind you “You are using mobile network to play, whether to continue”.

ZOSI

PROFESSIONAL SECURITY MADE EASY

www.zositech.com

service@zositech.com

All rights reserved. No part of this publication may be reproduced by any means without written permission from ZOSI. The information in this publication is believed to be accurate in all respects.

ZOSI cannot assume responsibility for any consequences resulting from the use thereof. The information contained herein is subject to change without notice. Revisions or new editions to this publication may be issued to incorporate such changes.

