

ZOSI

Quick Operation Guide



Wireless NVR System

For more information of your new system, please refer to www.zositech.com

Statement

Thank you for purchasing this product. ZOSI is committed to providing our customers with a high quality, reliable security solution. ZOSI cannot assume responsibility for any consequences resulting from the use thereof.

Before Installation

This product may require cabling. It is strongly suggested to test all products and parts before installation and cabling.

Applications

The system is a standalone system. It need to connect with any monitor to start live view (Such as PC monitor, TV etc.)

By adding a 3.5" SATA hard drive to the NVR, you can record&playback videos.

By connecting the NVR to the Internet, you can view the cameras anywhere anytime.

Note

This instruction is used to guide you install the system and remote surveillance, more instructions and details can be downloaded from <https://support.zositech.com/>.

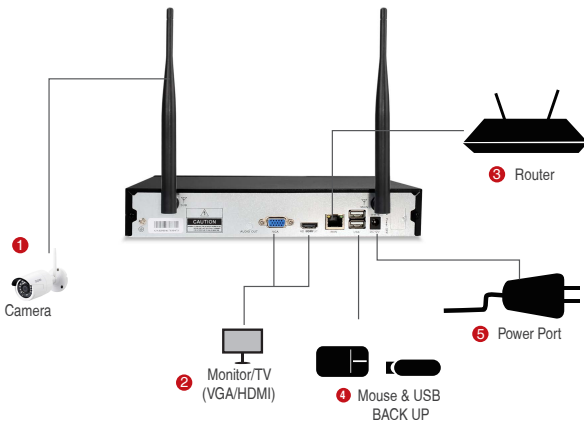
Tech Support

Website: <https://support.zositech.com/> Email: service@zositech.com



1. Connecting your system

1.1 Steps to connect your system



- 1 Connect the cameras to their power supplies (smaller 12V 1A power adapter).
- 2 Connect a monitor to the NVR via its HDMI or VGA port (HDMI and VGA cables are not included).
- 3 Connect the NVR to Router with an Ethernet cable. IP Camera Video inputs: Just in case any of your cameras are out of WiFi range, you can connect cameras to router with an Ethernet cable.
- 4 Plug the mouse (included) into the USB port at the rear panel of NVR. You will then be able to operate the NVR with the mouse.
- 5 Connect the NVR to its power supply (bigger 12V 2A power adapter).

1.2 Camera Mounting Spots

1.2.1 Mount the cameras anywhere within the Wi-Fi range, plug them to power with included power adapters (smaller ones are for cameras).

1.2.2 The cameras should start to stream videos to NVR within 1 minute.

1.2.3 If it does not display video on your monitor, the distance maybe too long or there are too many obstacles. Please move the cameras closer to the NVR.

1.3 Adjust the camera

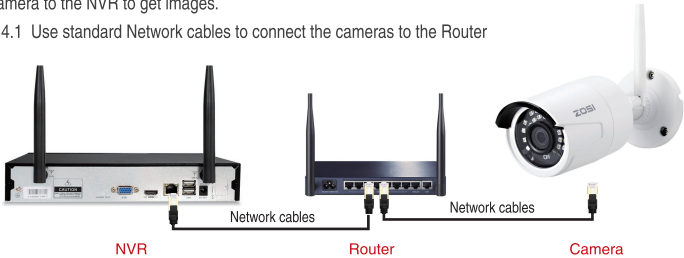
- 1 Adjust the position upward or downward as you want.
- 2 The neck of the stand attached to the mounting base, rotate the stand by loosening the radial joint locking ring. Once in position ,tighten the ring again.



1.4 Wired connection

If some of the cameras' mounting spots are out of WiFi range, You need to use hard wire to connect the camera to the NVR to get images.

1.4.1 Use standard Network cables to connect the cameras to the Router

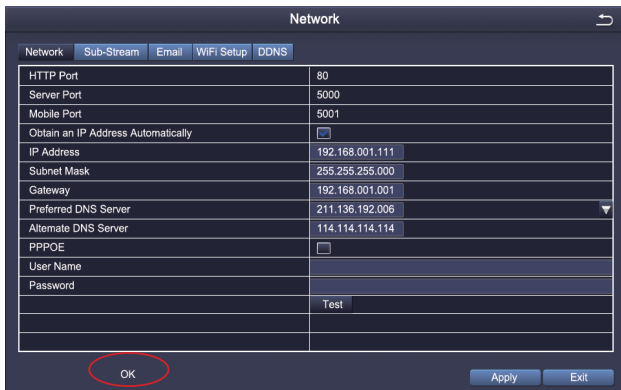


1.4.2 After connecting the camera to the router, please right click the mouse > go to "IPC Config" > click "Search" > click "Wifi Add" .Then you will see the camera is added to the NVR and display video on the screen.

1.4.3 How to test your NVR's network ?

- (1) Right click Mouse > Go to Main Menu > Setup > Network
- (2) Tick 'Obtain IP address automatically'
- (3) Click 'Test', if 'OK' is displayed, the network is connected successfully.

Note: Please ensure DHCP in your router is open.





2. View on Smartphone

Step 1 Download App

Search **Zosi Smart** in App store or Google Play.Or Scan the QR Code to download the App.

Please go to <https://support.zositech.com/> download Zosi Smart and AVSS.



Zosi smart



App store



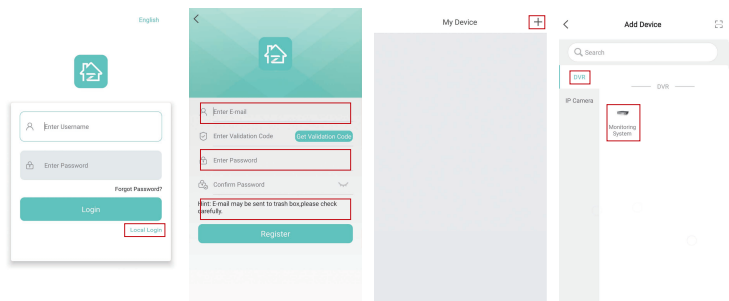
Google play

Step 2 Run the App

A: Install the free **Zosi Smart** App.

B: Tap Register and input your E-mail to get validation code, click next to input email box, password, then save it.

C: Login the App,get into the main interface (My Device), click "+" in the upper right corner,three different options of device addition are available.



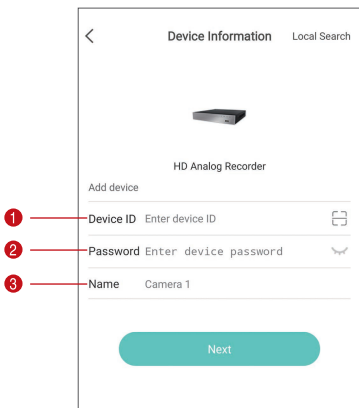
D: Select "DVR" -> "Monitoring System" and "Scan QR Code" (Or go to the DVR menu to find the device device ID Main Menu -> Information -> System)

1 Enter the Device ID or Scan QR Code.

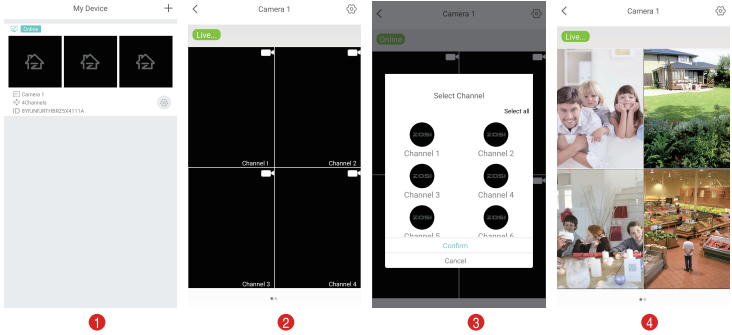


2 Password: Enter the NVR's Password

3 Name: Choose a name for your system of your choice.



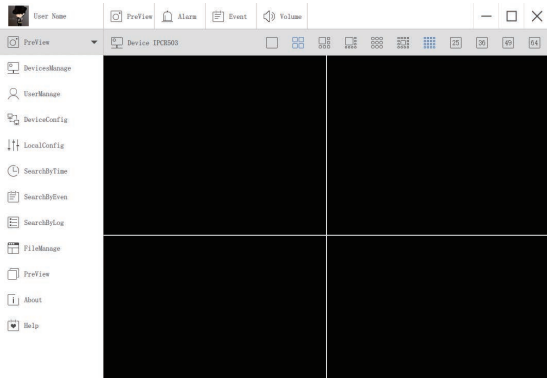
E: Then go back to the Device list > Tap the device > Tap "+" to select channel you need > Tap Confirm to start preview.



3. View on PC Client Software

Download AVSS PC Client , install and start it as below.

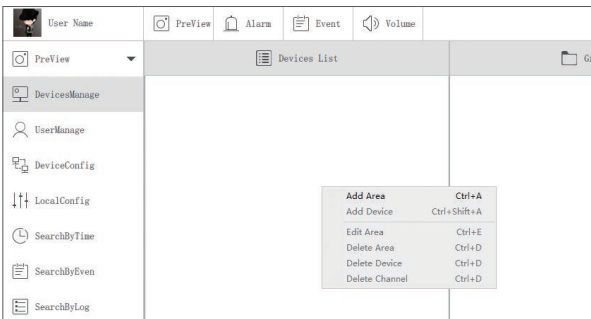
Please go to [https://support.zositech.com/download/Zosi Smart and AVSS](https://support.zositech.com/download/Zosi%20Smart%20and%20AVSS).



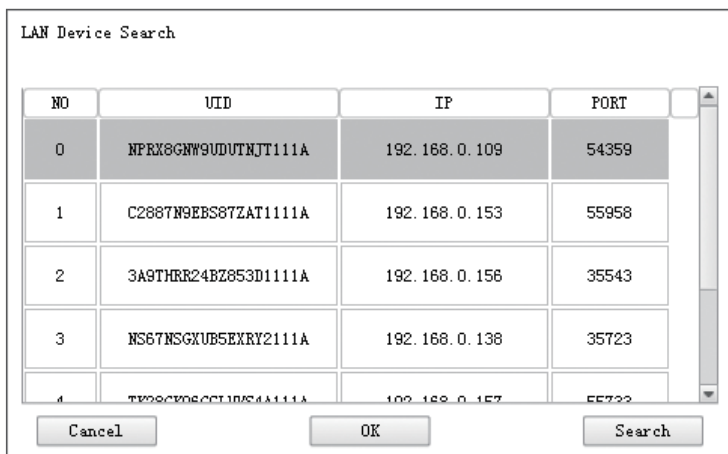
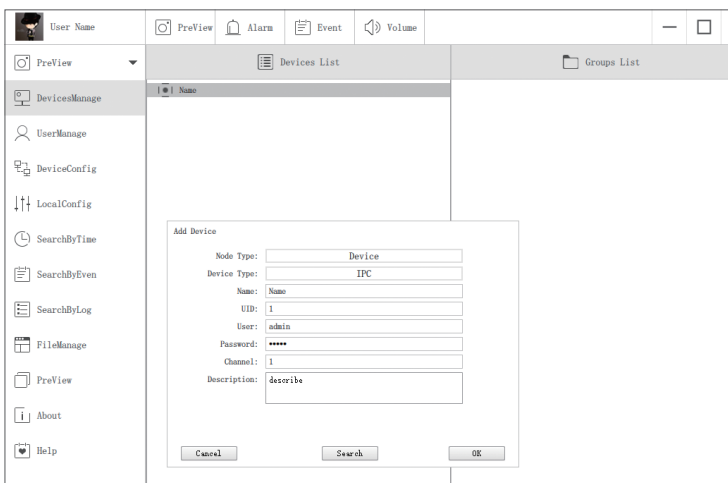
Click the Devices Manage to add the device.

First, crate a group.

Then, add device under the group.

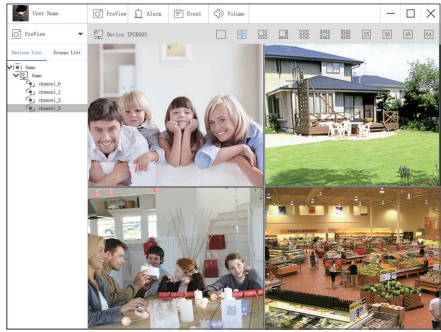


Please note to choose device type (NVR or IPC) when adding devices.
 There are two ways to add device.
 One way is adding device by directly inputting UID number.
 Another way is adding the local device by searching LAN on search bar.



Click "ok" to complete device adding.

Click "PreView" on menu, and double click the device you want to watch on list, the image will show up.



4. Record video

The system may not include Hard Disk depending on the kit you selected. This system works with most 3.5" SATA Hard Disk.

1. Install a Hard Disk (if your system has preinstalled Hard Disk, please skip this step)



- ① Unplug your NVR from power, unscrew and remove the top cover.
- ② Connect the SATA power and data cables from the NVR to the corresponding ports on your Hard Disk (as shown).
- ③ Place the Hard Disk into the NVR. Any cable should cross up over the Hard Disk.
- ④ Holding the Hard Disk and the NVR, gently turn it over and line up the holes on the Hard Disk with the holes on the NVR. Using a Phillips screwdriver, screw the provided screws into the holes. Assemble the cover.

Note:

After installing a Hard Disk, you need to first format the Hard Disk before recording.

Right click the mouse > go to Main Menu > Disk Management > Select the Hard Disk > Click Format > Apply.

2. Record video

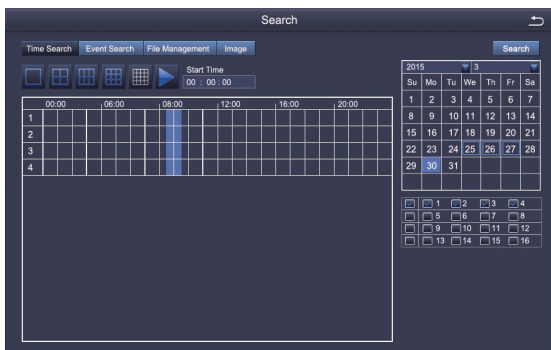
Right click mouse > Go to Main Menu > Setup > Record

You shall see the record settings for all channels. Change the record setting according to your preference and apply the changes.



5. Playback video

Get into system **Main Menu > Search**, system presents picture as following.



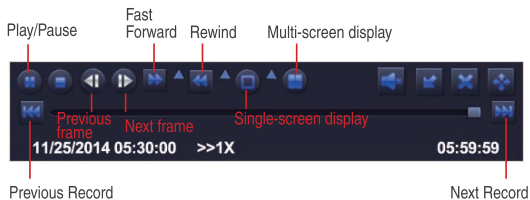
Search the video you want via time or Event, then play it.



Select the channel



Start playing



Previous Record: Move to last recorded event

Next Record: Move to next recorded event

Fast Forward: video can be played at different speed, from 1/4 times to 16 times.

Rewind: Video play can be rewinded at 1 time, 8 times, 16 times and 32 times.

Screen Display Mode: Both single-screen and multi-screen are available. You can choose how many channels you want to playback one time. Channel without records presents blank screen.



6. Motion Detection

Set motion Detection,NVR will record only when motion or movement is detected.

Right click mouse > Main Menu > Setup > Alarm > Motion > Motion detection.

The system records when motion is detected by the camera.  An icon is shown when motion is detected.

Montion

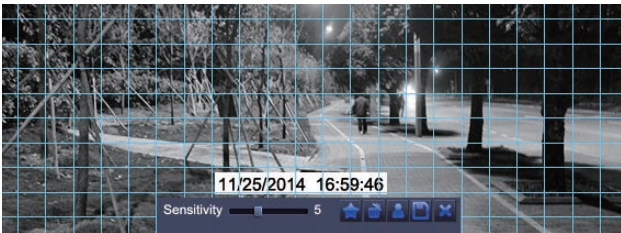
Motion Schedule

CH	Enable	Holding Time[s]	Trigger	Area
1	<input checked="" type="checkbox"/>	10	Setting	Setting
2	<input checked="" type="checkbox"/>	10	Setting	Setting
3	<input checked="" type="checkbox"/>	10	Setting	Setting
4	<input checked="" type="checkbox"/>	10	Setting	Setting
5	<input checked="" type="checkbox"/>	10	Setting	Setting
6	<input checked="" type="checkbox"/>	10	Setting	Setting
7	<input checked="" type="checkbox"/>	10	Setting	Setting
8	<input checked="" type="checkbox"/>	10	Setting	Setting
9	<input checked="" type="checkbox"/>	10	Setting	Setting
10	<input checked="" type="checkbox"/>	10	Setting	Setting
11	<input checked="" type="checkbox"/>	10	Setting	Setting
12	<input checked="" type="checkbox"/>	10	Setting	Setting

All

10

Default Apply Exit



Select Camera. Tick the Channel you want to record on motion detection.

Holding Time. Set recording time length after motion stop.


Trigger. Multi-channels can be set to record when detect the motion by one of cameras. For example, when camera 1 detects motion, camera 2 and camera 3 can be triggered to record as well.

Area. It is allowed to set sensitivity area of camera viewing range.

Click **STAR**  to make the whole viewing range as sensitivity area;

Click **Trash Box**  to remove sensitivity area;

Click and drag mouse to draw or erase the sensitive area.

 Click to save setting

 Click to exit

As Color and luminance is important for sensitivity, so it's necessary to adjust its value at specific conditions. The default value is 4 while value range is from 1 to 8.

Right click mouse to show or hide control menu at screen bottom.


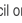
Test the setting by moving something or some one walk through grid area within camera view range. If NVR detects movement within grid area, a yellow humanoid figure would be presented in the screen. The grid could not cover flag, trees or some other flow objects in the wind to avoid false alerts.

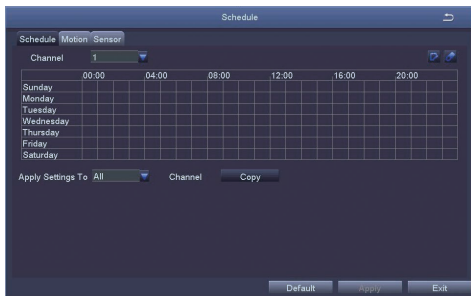


7. Time scheduled Record

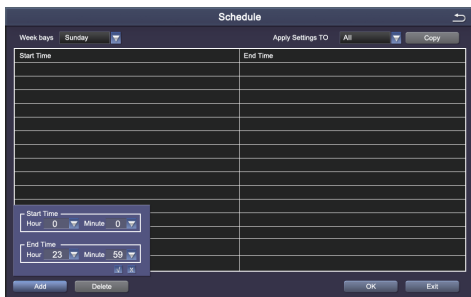
Set Time scheduled record, you may configure each channel to record at specific times based on time of day. Right click the mouse > go to Main Menu > Setup > Schedule.

The schedule for automatic recording can be set either of two ways.

1 By highlighting individual hours for specific days by using the pencil tool  in the upper right of the window. The adjacent eraser tool  removes the highlighting in a block. click on either the pencil or eraser tool to turn them off. Settings can be copied and applied to any or all of the channels and to any other day.



2. Blocks of time to be recorded can also be set up by double clicking on a field adjacent to a day. Multiple schedules can be created and saved with start and stop times down to the minute. These can then be applied to multiple days and cameras.



Note:

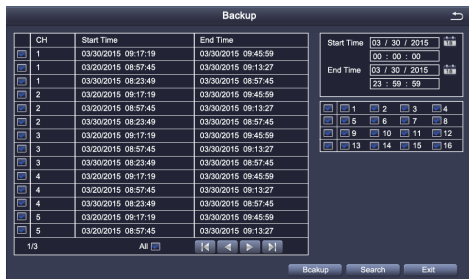
Recording Priority: Alarm Recording > Motion Detection Recording > Manual Recording > Time Scheduled Recording.



8. Backup the video for memory

1. Plug an USB flash disk to your NVR's USB port.

2. Right click the mouse > Main Menu > Backup > choose the channel and time period > Search > Choose the video clips you want to backup > Click Backup.





9. Add IP Camera

If you buy the wireless camera and NVR in a package, the wifi camera is added to the NVR by default, you can see video when power on.

If you buy wireless Camera and NVR separately, then you need to add the device manually, do it as following,

- 1) Connect the NVR and wifi camera by RJ-45 cable, as shown in figure 1.



Figure 1

- 2) Enter the NVR interface, right click the mouse, select "IPC Channel Config", as shown in figure 2.



Figure 2

- 3) Click "search", wifi camera IP address is displayed, then click "Wifi add" to add the camera to NVR system, as shown in Figure 3 and Figure 4.



Figure 3



Figure 4

4) Wait for a few seconds, camera would be added to NVR channel successfully, as shown in Figure 5.

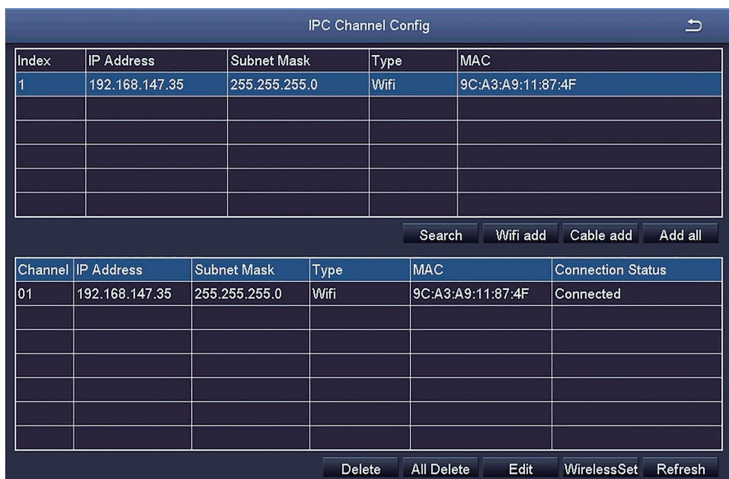


Figure 5

5) Unplug RJ-45 cable from the added camera, and connect it to another wifi camera, then do it as step 3 to step 5 as above.

ZOSI

PROFESSIONAL SECURITY MADE EASY

www.zositech.com
service@zositech.com

All rights reserved. No part of this publication may be reproduced by any means without written permission from ZOSI. The information in this publication is believed to be accurate in all respects.

ZOSI cannot assume responsibility for any consequences resulting from the use thereof. The information contained herein is subject to change without notice. Revisions or new editions to this publication may be issued to incorporate such changes.

