

# ZOSI

PROFESSIONAL SECURITY MADE EASY

## Quick Start Guide



Zosi Smart



App store



Google play

Z18.8.T.1.4040000735

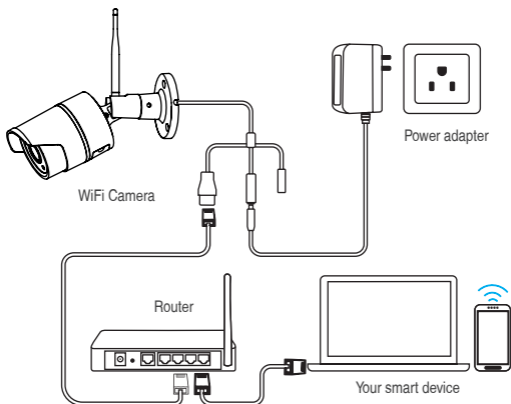
For more information of your new system, please refer to [www.zositech.com](http://www.zositech.com)

## 1. Camera Overview



## 2. Mounting Camera

### 2.1 Camera Connection Diagram



For initial setup, connect the camera to the LAN port of the router by an Ethernet cable. Then follow the steps below.

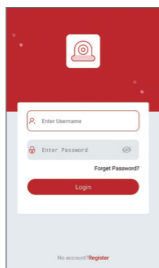
**Make sure your camera and smart device are connected to the same router.**

### 3. Personal Account Registration

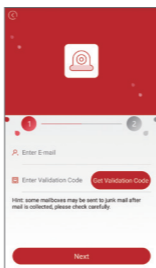
The following instructions are for the Android App; instructions for the iOS version are slightly different.

- Start and install the mobile App "Zosi Smart", which can be downloaded by scanning the QR Code shown on the front page of this manual ).
- Click "Register" at the bottom of the interface to register your App account.
- Enter your email address to get validation code. Click "Next" to set the account password and complete the registration process.

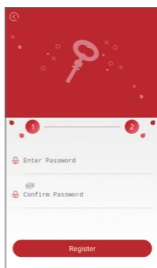
**Note:** Please login your email before registration in case you miss the validation code.



Login Interface





Registration



Login Password Setting

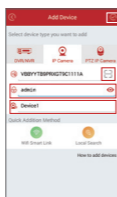
### 4. Add device(At the first time)

#### 4.1 Wired Connection

- Power the device and wait for 20 seconds to proceed with next step
- Connect the device to WiFi router using a RJ45 cable.
- Connect your smart phone to the same network as the device's.
- Start the Zosi Smart App and press the icon  in the upper right corner, as shown in the figure
- Choose the "IP Camera" option in the app
- Click the  icon to scan the QR on the camera.
- Click "✓" in the upper right corner to save the device adding



Add device



Save

Scan QR Code

The default password is "admin"

You can create the device name as needed.


Scan this QR

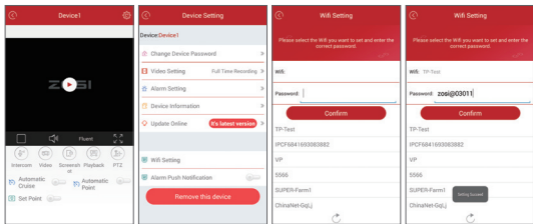


Note: If adding the device unsuccessfully, please hold the reset button to reset the camera and then start reconnecting by following the above instructions (from steps A to E) until you see the video on your phone.



## 4.2 Convert Wired Connection to Wireless Connection

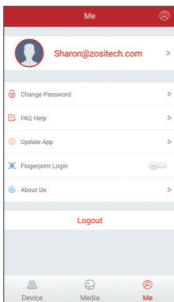
- Search the corresponding device shown on device list and enter the real-time preview;
- Click the  button in the upper right corner to enter device settings
- Select **WiFi Setting** to proceed with the wireless configuration;
- Select the WiFi network which has stable and strong signal and enter the WiFi password accordingly;
- Click **Confirm** to finish converting the wired connection to wireless connection.



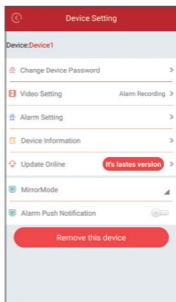
## 5. App Function Introduction

### 5.1 App Information

- Change Password: modify the login password of the App;
- Check for Updates: update your App to the latest version;
- Fingerprint Login: no need to enter password if fingerprint touch function is available on your phone.



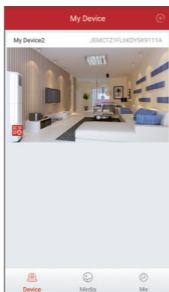
My Information



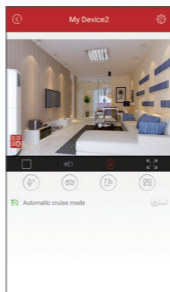
Device Setting

## 5.2 Device Information

- (1) Share QR Code of the device;
- (2) Video: click to start recording or stop recording;
- (3) Screen Shot: click to start screen capture;
- (4) Event Playback: click to view the motion detection video and other videos stored by the camera.
- (5) SD/HD: adjust sharpness of the image;
- (6) Intercom: two-way audio (applicable for device that supports this feature).



Device Information



Video Preview

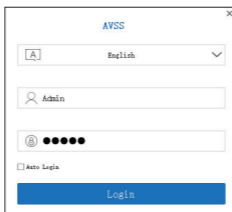
## 6. PC Client Remote Monitoring

The PC Client (AVSS) is applied for DVR/NVR/IPC preview with features like real-time view, device management, remote video playback and etc.

### 6.1 Login

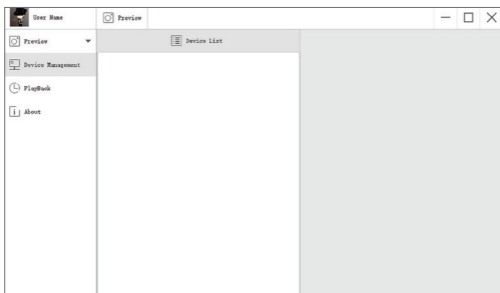
Double click the icon "AVSS" to install the PC Client. Select the language and log in.

**Note:** Use the default user name and password, or enter the same login information as your mobile App.

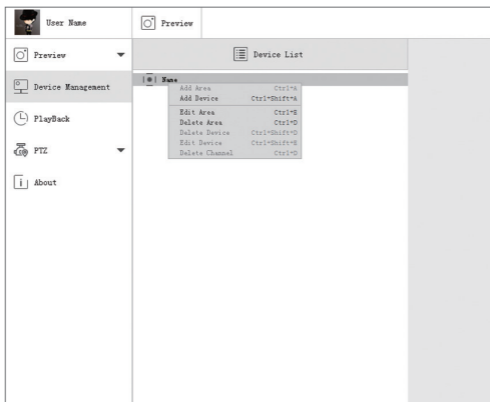


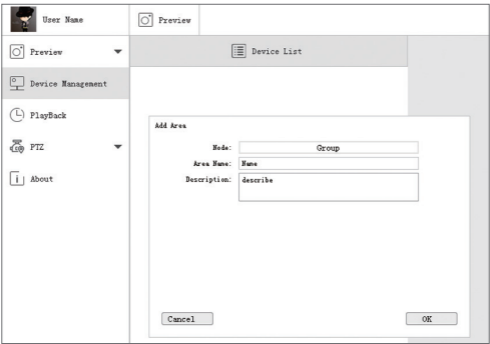
## 6.2 Device Management

6.2.1 Click "Device Management" to add areas and devices.

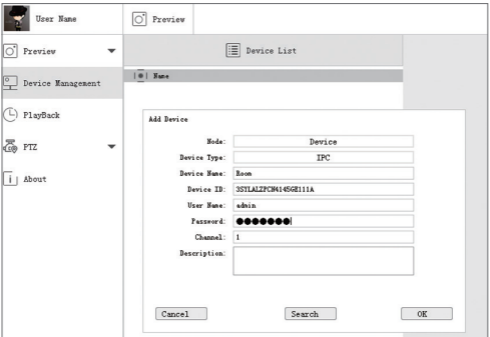
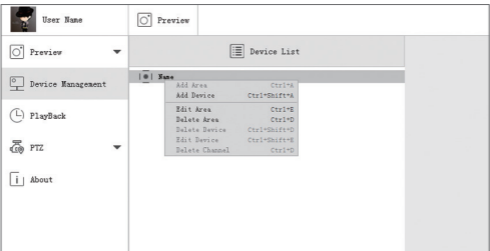


6.2.2 Add Area: Right click the blank to add area and enter the name. The Area Name is used to describe the place being monitored.



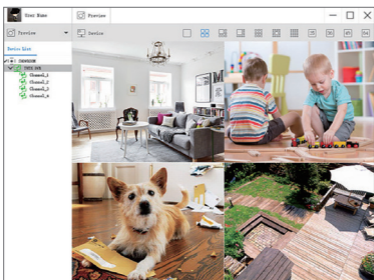
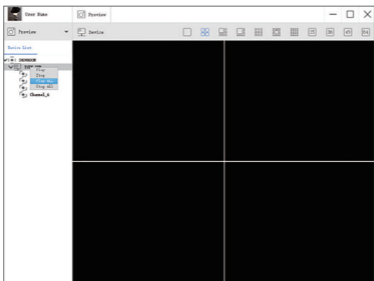


6.2.3 Add Device: Right click the Area Name to add device and change type of the device. Enter the device name, device ID, user name, device password and channel number, then click “OK” to save.



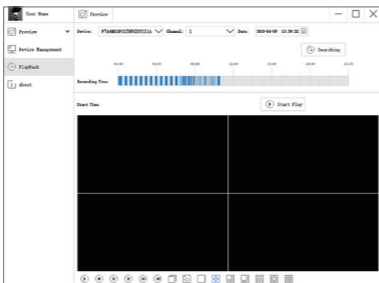
## 6.3 Preview

Click preview to find device list, right click device to Play All and Stop All, preview video can be displayed or stopped.



## 6.4 Playback

Click "PlayBack"; select device ID, channel number, date and then search to find the video. Double click record time to set the exact time and click "Start Play".

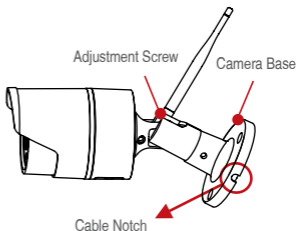




## 7. Installing

### 7.1 Before Installing the Camera

- Decide whether to run the cables through the wall / ceiling (drilling required) or along the wall / ceiling.
- If you run the cables along the wall / ceiling, you must run the cable through the cable notch on the base. This will keep the camera base fasten to the surface when mounted.

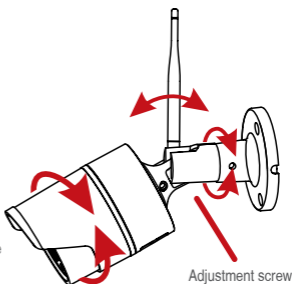
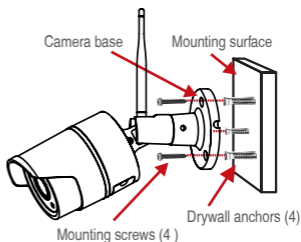


### 7.2 To install your camera

- (1) Use the included mounting template to mark holes for the screws. Drill holes for the mounting screws.

NOTE: Insert the included drywall anchors if you are installing the camera in drywall.

- (2) Connect cables as shown in the section "Connecting the Camera"
- (3) Feed the cable through the mounting surface or cable notch and mount the camera stand to the surface using the provided screws.
- (4) Use a spanner (included) to loosen the adjustment screw.
- (5) Adjust the camera position as demand.
- (6) Tighten the adjustment screw to secure the position.



#### ATTENTION

This camera includes an Auto Mechanical IR Cut Filter. When the camera changes between Day/Night viewing modes, an audible clicking noise may be heard from the camera. This clicking is normal, and indicates that the camera filter is working.

Q. Why can't I add a device using local search?

A: Make sure that your device is in the same LAN as your phone. If you cannot make both devices in the same LAN, manually enter the UID of your device to complete the adding.

Q. Why is the device disconnected?

A: Please check:

Is your device connected to the network?

Is the router working properly?

Do you enable the feature of automatically obtaining an IP address?

Q. Why can't I find a video recording file?

A: Please check:

Is the TF card damaged?

Is the date of the search file valid?

Is the device system set at the correct time?

# ZOSI

PROFESSIONAL SECURITY MADE EASY

[www.zositech.com](http://www.zositech.com)  
[service@zositech.com](mailto:service@zositech.com)

All rights reserved. No part of this publication may be reproduced by any means without written permission from ZOSI. The information in this publication is believed to be accurate in all respects.

ZOSI cannot assume responsibility for any consequences resulting from the use thereof. The information contained herein is subject to change without notice. Revisions or new editions to this publication may be issued to incorporate such changes.



RECYCLING

