

ZOSI

HD Smart Wi-Fi Camera
Quick Start

English

01-05

Deutsch

06-10

Français

11-15

Italiano

16-20

Español

21-25

日本語

26-30

Download the App into Your Mobile Device

Option 1: Search and download YCC365 Plus from App Store or Google Play;

Option 2: Scan the QR code below to download.



For Android



For iOS

Account Registration and Login

Please register an account with a valid email address at your first use of this App, then log in.

The image displays three sequential screens from the app's registration and login process. The first screen is a welcome page with the text "Hi, You are welcome" and a wrench icon. It features input fields for "Email address" and "Password", a "Log in" button, and links for "Sign Up" and "Forget password". Below the "Log in" button is the text "Log in on mobile phone". The second screen is titled "Email address" and has a back arrow, an "Email address" input field, and a "Next" button. The third screen is titled "Password" and has a back arrow, a note stating "The password length is 6-26 digits, consisting of uppercase letters, lowercase letters and numerals", input fields for "Password" and "Confirmation password", and a "Next" button.

Note: Log in on mobile phone is only applicable to Vietnam.

Connecting the Camera to Your Mobile Device

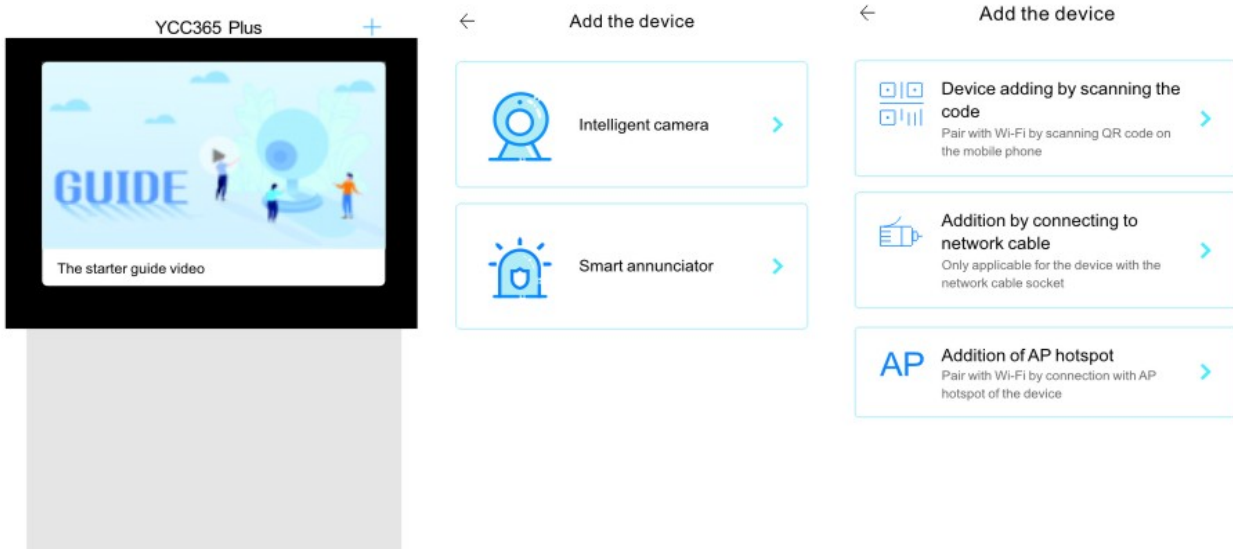
IMPORTANT:

- (1) For all connecting options, you will hear "Please configure camera by scanning code or AP hotspot" after the camera is powered on. Use the pin to press and hold the **Reset** button for 5-6s to reset the camera if no voice prompts. You will hear "Reset Success" at a successful reset;
- (2) This camera only supports 2.4GHz Wi-Fi;
- (3) For stable network connection, please make sure the camera and the mobile device are close to the router.

1. Connecting by Scanning the QR Code

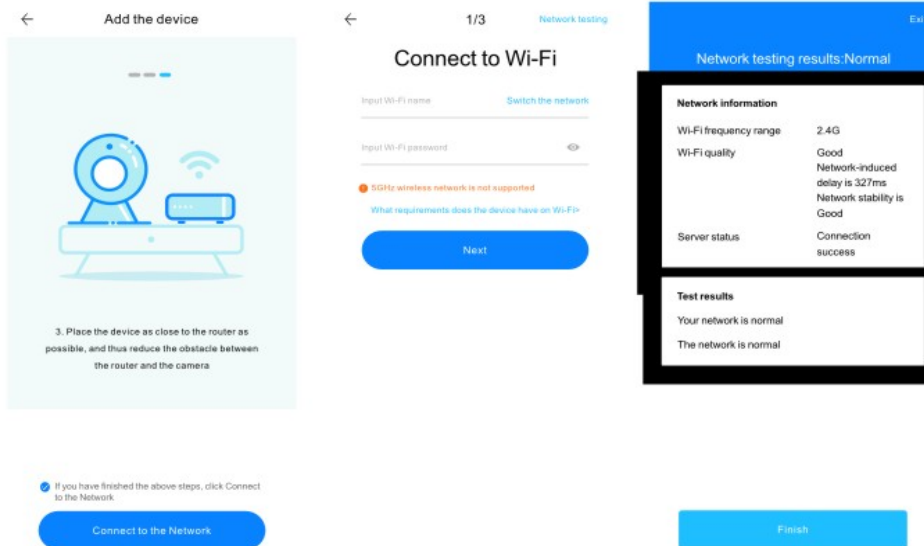
Step 1: Connect the mobile device to your Wi-Fi, then log in to YCC365 Plus.

Click **+** in the upper right corner, select **Intelligent camera** and **Device adding by scanning the code**;



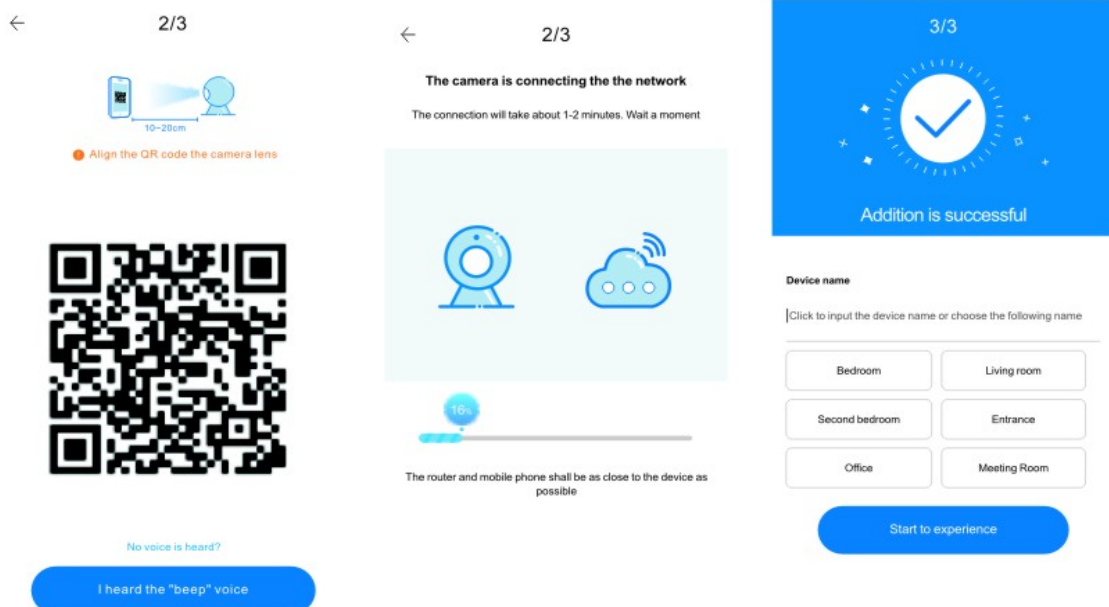
Step 2: Tick **If you have finished the above steps**, click **Connect to the Network**, then click **Connect to the network**. Select the Wi-Fi your mobile device is connected, enter the correct password and click **Next** to continue;

Tip: Click **Network Testing** in the upper right corner of **Connect to Wi-Fi** interface to check the status of your Wi-Fi connection.



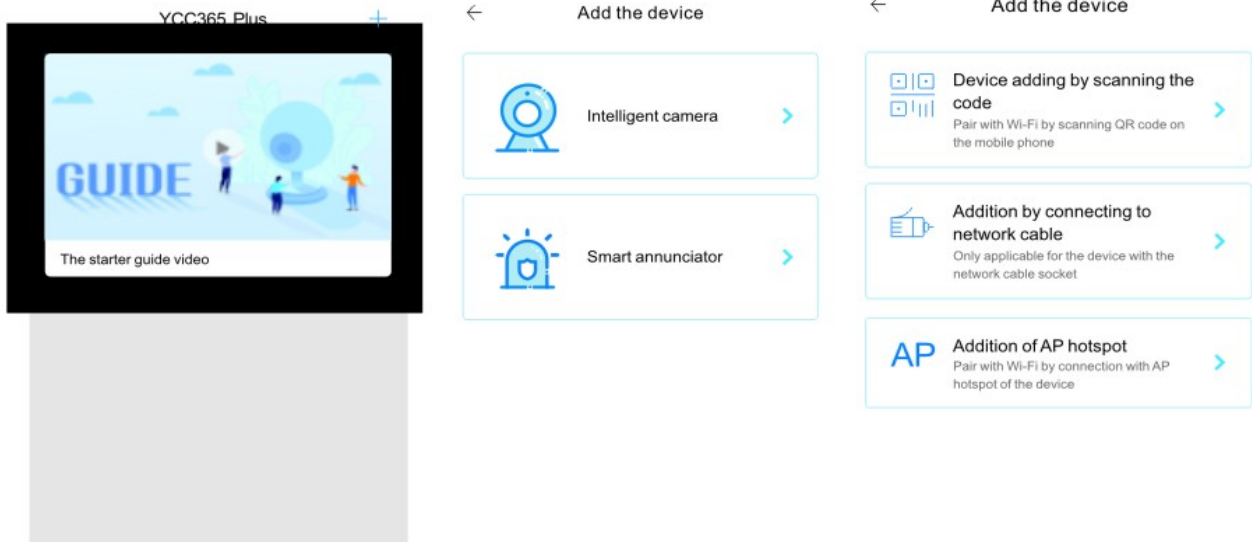
Step 3: Align the QR code on your mobile device with the camera lens and keep a distance of 4-8 inches;

Step 4: Click I heard the "beep" voice to connect to the Internet after 2 beeps from the camera. During the process, you will hear "Please wait for Wi-Fi connecting" and "Please wait for Internet connecting". When you hear "Internet connected, welcome to use cloud camera", the camera is connected successfully.



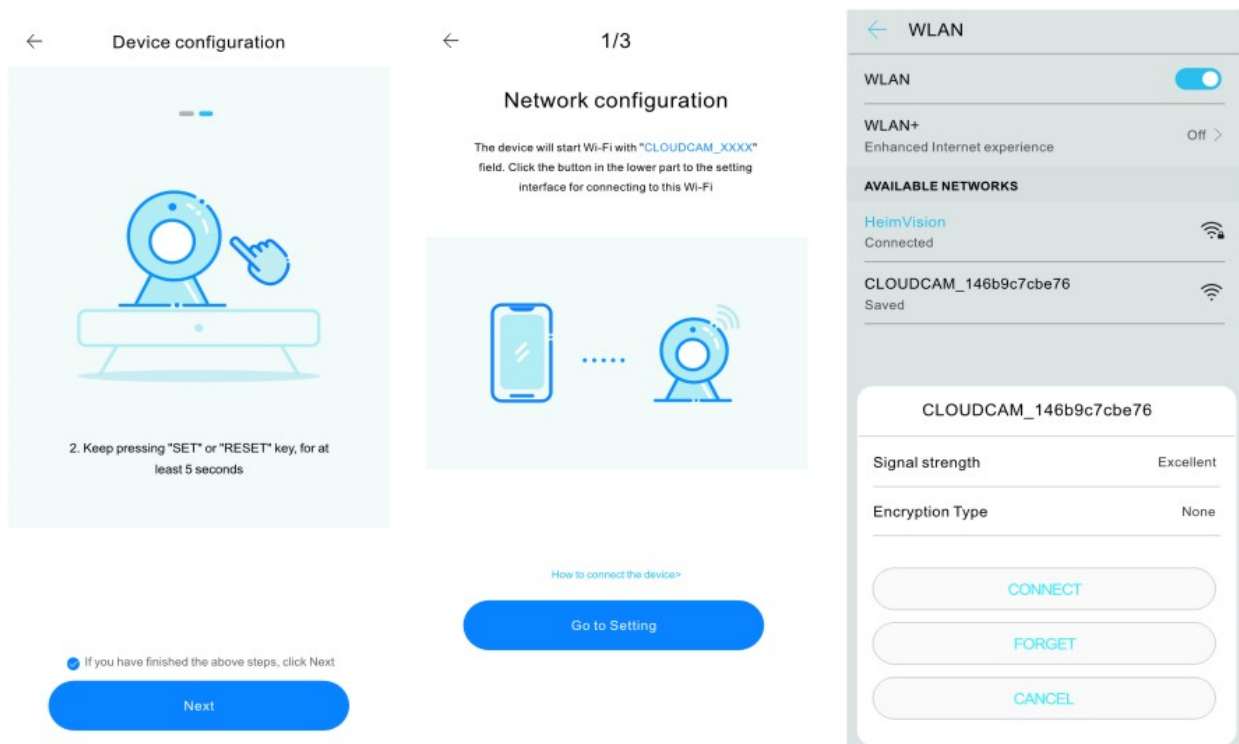
2. Connecting by AP Hotspot

Step 1: Connect the mobile device to your Wi-Fi, then log in to YCC365 Plus. Click + in the upper right corner, select Intelligent camera and Addition of AP hotspot;

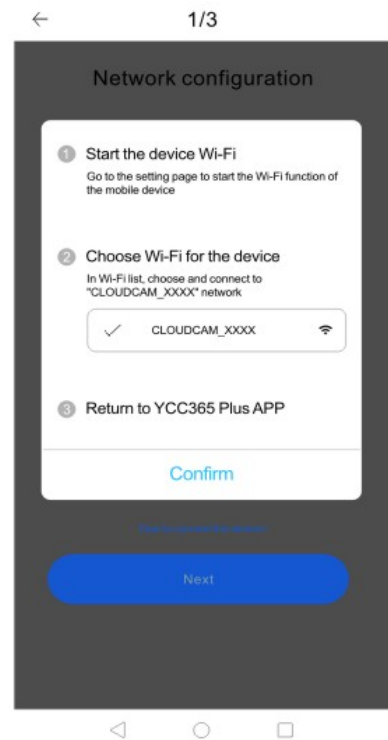
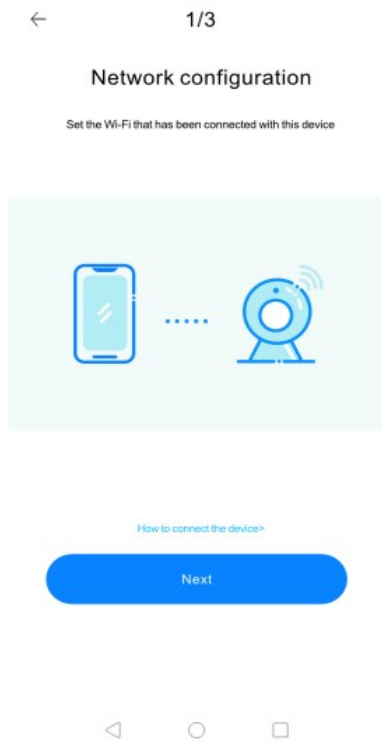
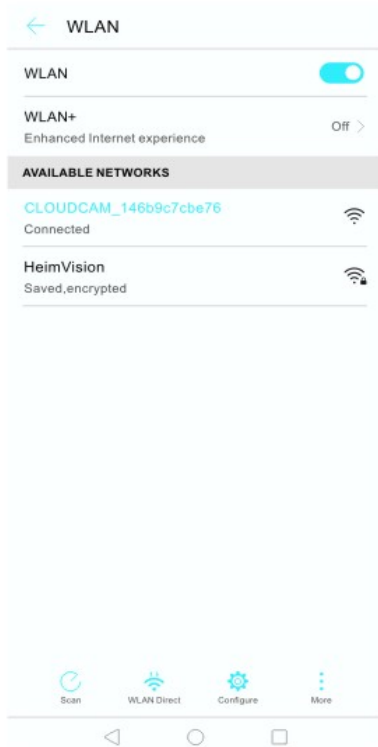


Step 2: Tick **If you have finished the above steps, click Next**, then click **Next** to enter the **Network configuration** interface;

Step 3: Click **Go to Setting** to enter the network setting interface of the mobile device, then connect to the **CLOUDCAM_XXXX** Wi-Fi;



Step 4: Tap **◀** to get back to **YCC365 Plus** to enter **Network configuration** interface, then click **Next** to continue;



Tip: There will be a pop-up window if the **CLOUDCAM_XXXX** Wi-Fi connection is failed.

Step 5: Select the Wi-Fi your mobile device is connected, enter the correct password, then click **Next**. The camera will connect to the Internet after 2 beeps from the camera. During the process, you will hear "Please wait for Wi-Fi connecting" and "Please wait for Internet connecting". When you hear "Internet connected, welcome to use cloud camera", the camera is connected to Wi-Fi successfully.

