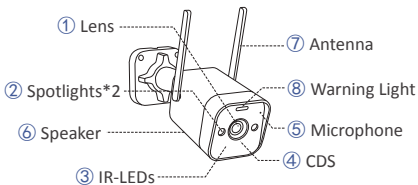
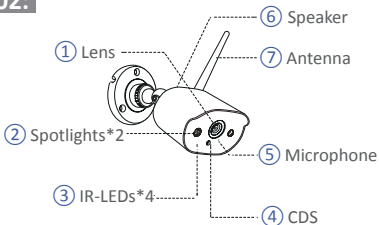


01 Camera

C188:



C302:

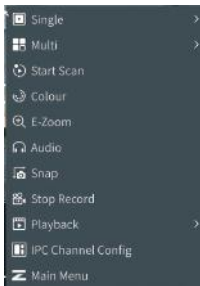


02 New Camera Pairing

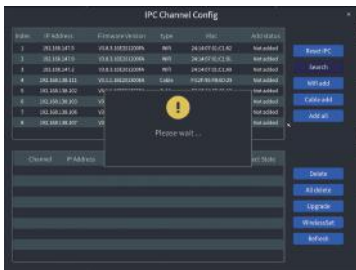
It is recommended that users conduct a power-on test before installation to ensure that each camera can work normally. If it fails, please contact our customer service.

If you want to add a new camera or reset the camera, please follow the following steps. Take out the camera (install the antenna), connect NVR and camera with a network cable. Make sure that NVR can display normally on the monitor, and then perform the following operations:

1. Right click the mouse, the main menu will come out.
2. Select and enter **IPC Channel Config** page.



3. Click the **Search** on the IPC Channel Config page to search for the corresponding IPC.



4. Double-click the searched cameras, or tick the camera and click **WiFi Add**. The status of IPC connected shows at the bottom of the page, and the corresponding monitoring video will display.



NOTE: If all eight IPC channels have been connected and you need to connect other cameras, then you will need to delete one or more channels to add other cameras.

IPC Channel Config

Index	IP Address	Firmware Version	Type	Mac	Add status
1	192.168.147.4	V8.8.3.182012009A	WB	24:14:07:01:C1:01	Not added
2	192.168.147.5	V8.8.3.182012009A	WB	24:14:07:01:C1:02	Added
3	192.168.147.7	V8.8.3.182012009A	WB	24:14:07:01:C1:04	Not added
4	192.168.147.8	V8.8.3.182012009A	WB	24:14:07:01:C1:07	Added
5	192.168.136.111	V8.1.1.182013006A	Cable	F4:2F:80:F9:4D:39	Not added
6	192.168.136.108	V8.1.1.182013006A	Cable	88:7C:72:01:41:50	Not added
7	192.168.136.103	V8.1.1.182013006A	Cable	D9:23:F9:4C:30:80	Added
8	192.168.136.100	V8.1.1.182013006A	Cable	08:10:14:00:C1:1F	Not added

[Reset IPC](#)
[Search](#)
[WiFi add](#)
[Cable add](#)
[Add all](#)

Channel	IP Address	Firmware Version	Type	Mac	Connect Status	
<input type="checkbox"/>	01	192.168.147.4	V8.8.3.182012009A	WB	24:14:07:01:C1:07	Connected
<input checked="" type="checkbox"/>	04	192.168.147.8	V8.8.3.182012009A	WB	24:14:07:01:C1:03	Connected
<input type="checkbox"/>	05	192.168.147.3	V8.8.3.182012009A	WB	24:14:07:01:C1:03	Connected
<input type="checkbox"/>	08	192.168.147.2	V8.8.3.182012009A	WB	24:14:07:01:C1:08	Connected
<input type="checkbox"/>	07	192.168.147.5	V8.8.3.182012009A	WB	24:14:07:01:C1:02	Connected
<input checked="" type="checkbox"/>	06	192.168.136.103	V8.1.1.182013006A	Cable	D9:23:F9:4C:30:80	Connected

[Delete](#)
[All delete](#)
[Upgrade](#)
[WirelessSet](#)
[Refresh](#)

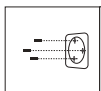
03 Camera Installation Steps

C188:

1. Adjust the camera antenna to keep it vertical to get the best reception.
2. Drill screw holes on the wall according to the mounting hole template, and insert the rubber plugs into the holes.
3. Align the camera with the rubber plugs on the wall, and screw it into the rubber plugs.
4. Adjust the camera to a proper angle.



1. Mount the antenna



2. Insert wall plugs into the holes



3. Install the camera



4. Adjust the angle

C302:

1. Screw the antenna onto the camera. Please keep the antenna vertical for best reception.

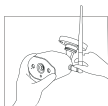
Note: fold the camera bracket before installing the antenna so you can easily install the antenna as shown in the picture.

2. Drill a hole on the wall according to mounting template, and insert wall plugs into the hole.

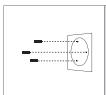
3. Align the mounting hole of the camera with the wall plugs, and then tighten screws into the wall plugs.

4. Loosen the bracket screw and adjust the camera to a proper angle.

5. Tighten the screws.



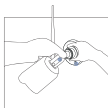
1. Mount the antenna



2. Insert wall plugs into the holes



3. Install the camera



4. Adjust the angle

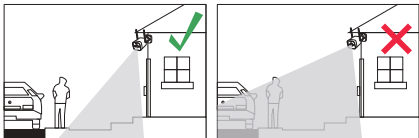


5. Tighten screws

04 Installation Tips

Please refer to the picture down below for the ideal installation. It is recommended to place the camera at least 7 feet (2.1m) above the ground and tilted slightly downward towards the monitoring area, excluding any high-traffic areas. (E.g. sidewalks or roadways).

- 1.Ensure that the camera's view is open and free of obstructions.
- 2.Place the camera at no more than 20 feet (6.1m) to ensure that the area you want to monitor is within the field of view.
- 3.Install the camera within the receiving range of the recorder.
- 4.The camera can be used outdoors (protection rating IP66).



NOTE: This camera is only compatible with ZOSI NVR.