

## Statement

Thank you for purchasing this product. ZOSI is committed to providing our customers with a high quality, reliable security solution. ZOSI cannot assume responsibility for any consequences resulting from the use thereof.

## Before Installation

This product may require cabling. It is strongly suggested to test all products and parts before installation and cabling.

## Applications

The system is a standalone system. It need to connect with any monitor to start live view (Such as PC monitor, TV etc.)

By adding a 3.5" SATA hard drive to the DVR, you can record&playback videos.

By connecting the DVR to the Internet, you can view the cameras anywhere anytime.

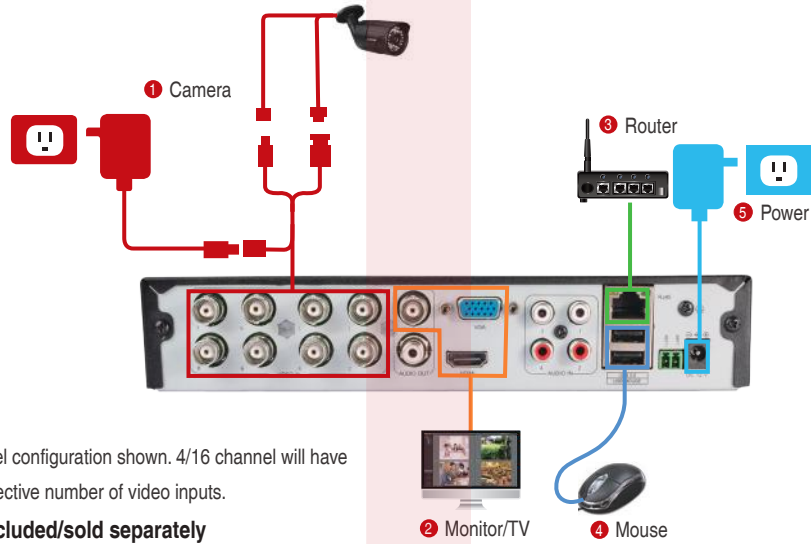
## Note

This instruction is used to guide you install the system and remote surveillance, more instructions and details ,please visit [www.zositech.com](http://www.zositech.com)

## Tech Support

Website: [www.zositech.com](http://www.zositech.com) Email: [service@zositech.com](mailto:service@zositech.com)

## 1. Connecting your system



8 channel configuration shown. 4/16 channel will have the respective number of video inputs.

### \*Not included/sold separately

- 1 Connect the Camera to DVR and Plug Camera to power.
- 2 Connect monitor to the DVR with HDMI,VGA,BNC port
- 3 Connect the DVR to Router with an Ethernet cable
- 4 Plug the mouse to the USB port
- 5 Plug DVR to power

Within seconds, you should see cameras' image live view on screen.

**User Name:** admin

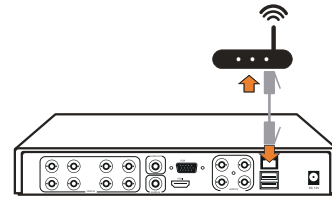
**Password:** Before enter the system, please set a password with no less than 6 characters.

## 2. View on Smartphone

### Step 1 Connect the DVR to the Internet

#### 2.1 Connect DVR to Internet

A: How to connect DVR to internet?



### B: How to test the network status of DVR?

- (1) Right click Mouse > Main Menu > Setup > Network.
- (2) Check "Obtain an IP Address Automatically".
- (3) Click "Test", if it shows "OK", indicating that DVR is connected to network

**NOTE:** Please make sure that the DHCP of the router is enabled.



### Step 2 Download App

Search **ZOSI VIEW** in App store or Google Play.Or Scan the QR Code to download the App.



ZOSI VIEW



App store



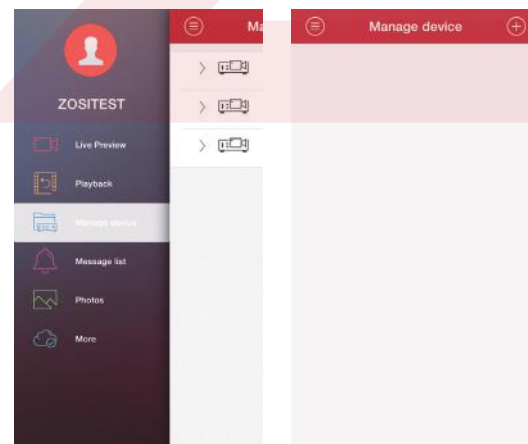
Google play

### Step 3 Run the App

A: Install the free **ZOSI VIEW** App.

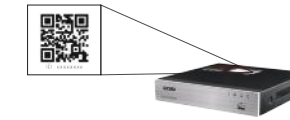
B: Tap **I want register** and enter your User name and password to create a new account.

C: Login the App, Tap **Manage Device** > Tap **+** button.



### D: Configure the following

- 1 **Name:** Choose a name for your system of your choice.
- 2 Enter the **Device ID** or Scan QR Code



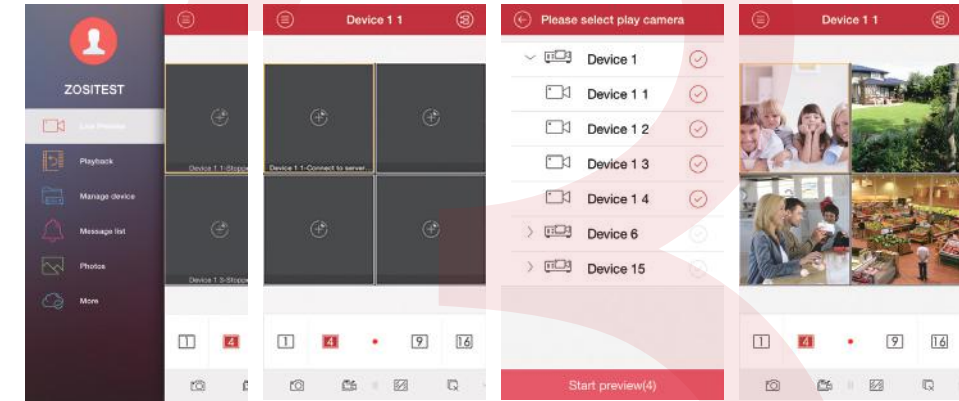
**Note:** The QR Code & Device ID printed on the label.

- 3 **User ID:** Enter the DVR's User Name (default: admin)
- 4 **Password:** Enter the DVR's Password
- 5 **Device type:** Choose DVR's Channel
- 6 Tap Save



E: Tap **⌂** go back to Main Menu > Tap **Live Preview** > Tap **⌂** to select paly camera > Tap **Start preview**.

The app opens in Live View and streams video from all connected cameras.

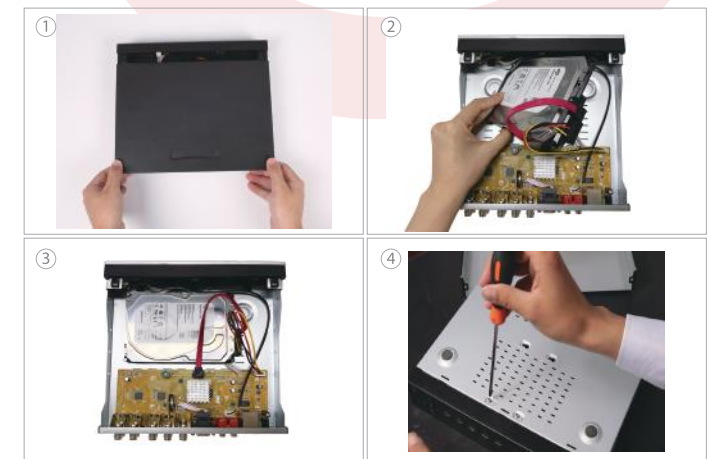


- 1
- 2
- 3
- 4

## 3. Record video

The system may not include HDD depending on the kit you selected. This system works with most 3.5" SATA HDD or 2.5" SATA HDD.

1. Install a hard drive (if your system has preinstalled HDD, please skip this step)



- ① Unplug your DVR from power, unscrew and remove the top cover.
- ② Connect the SATA power and data cables from the DVR to the corresponding ports on your HDD (as shown).
- ③ Place the HDD into the DVR. Any cable should cross up over the HDD.
- ④ Holding the hard drive and the DVR, gently turn it over and line up the holes on the hard drive with the holes on the DVR. Using a Phillips screwdriver, screw the provided screws into the holes. Assemble the cover.

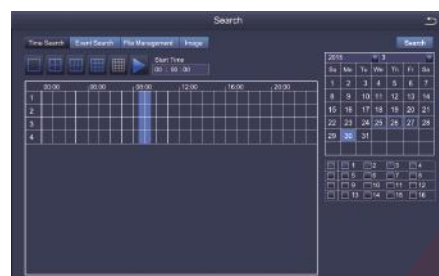
## 2. Record video

Right click mouse > Go to Main Menu > Setup > Record

You shall see the record settings for all channels. Change the record setting according to your preference and apply the changes.

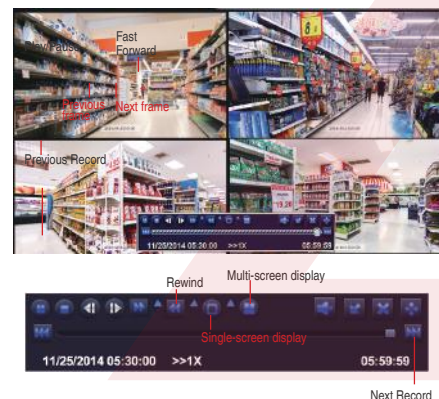
## 4. Playback video

Get into system **Main Menu > Search**, system presents picture as following.



**Search** the video you want via time or Event, then play it.

- Select the channel
- Start playing



**Previous Record:** Move to last recorded event

**Next Record:** Move to next recorded event

**Fast Forward:** video can be played at different speed, from 1/4 times to 16 times.

**Rewind:** Video play can be rewinded at 1 time, 8 times, 16 times and 32 times.

**Screen Display Mode:** Both single-screen and multi-screen are available. You can choose how many channels you want to playback one time. Channel without records presents blank screen.

## 5. Motion Detection

Right click mouse > Main Menu > Setup > Alarm > Motion > Motion detection.

The system records when motion is detected by the camera. An icon is shown when motion is detected.



**Select Camera.** Tick the Channel you want to record on motion detection.

**Holding Time.** Set recording time length after motion stop.

**Trigger.** Multi-channels can be set to record when detect the motion by one of cameras. For example, when camera 1 detects motion, camera 2 and camera 3 can be triggered to record as well.

**Area.** It is allowed to set sensitivity area of camera viewing range.



Click **STAR** to make the whole viewing range as sensitivity area;

Click **Trash Box** to remove sensitivity area;

Click and drag mouse to draw or erase the sensitive area.

- Click to save setting
- Click to exit

As Color and luminance is important for sensitivity, so it's necessary to adjust its value at specific conditions. The default value is 4 while value range is from 1 to 8.

Right click mouse to show or hide control menu at screen bottom.

Test the setting by moving something or some one walk through grid area within camera view range. If DVR detects movement within grid area, a yellow humanoid figure would be presented in the screen. The grid could not cover flag, trees or some other flow objects in the wind to avoid false alerts.

## 6. Backup the video for memory

1. Plug an USB flash disk to your DVR's USB port.
2. Right click the mouse > Main Menu > Backup > choose the channel and time period > Search > Choose the video clips you want to backup > Click Backup.



## 7. Connect to WiFi

**Only wireless dongle RT3070 can be supported by the DVR.**

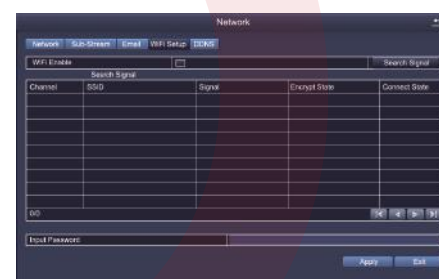
**Step 1.** Connect WiFi USB Dongle to USB2.0 port.



**Step 2.** Right click Mouse > Main Menu > Setup > Network > WiFi Setup.

**Note:** It needs to connect the WiFi device again after unplugging.

**Step 3.** Click Search Signal to choose a WiFi signal and input corresponding WiFi password, click OK. When it presents Connected, click **Apply** and **Exit**.



## F 8. FAQs

Q: Why can't my device connect to the Internet?

A: Please check  
Is the connected network work normally?  
Is the router working properly?  
Is the DHCP protocol of the router enabled?

Q: Why can't I search for video files?

A: Please check  
Does the hard drive work normally?  
Is the search time valid?  
Is the system time correct?

Q: Why can't some channels be displayed?

A: Please check  
Is the camera plugged in?  
Is the camera connected to DVR?

**ZOSI**

www.zositech.com  
service@zositech.com

All rights reserved. No part of this publication may be reproduced by any means without written permission from ZOSI. The information in this publication is believed to be accurate in all respects.

ZOSI cannot assume responsibility for any consequences resulting from the use thereof. The information contained herein is subject to change without notice. Revisions or new editions to this publication may be issued to incorporate such changes.

