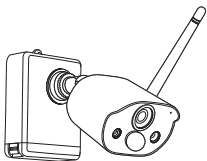


01/ What's in the Box



Camera*1



Quick Start Guide*1

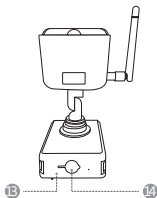
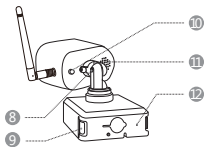
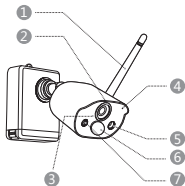


Mounting Base*1



Mounting Screw Bag*1

02 / Camera



- | | | |
|-----------------|-----------------------|--------------------|
| ① Antenna | ⑤ Network Indicator | ⑨ Release Button |
| ② HD Lens | ⑥ PIR Sensor | ⑩ Power Switch |
| ③ Infrared LEDs | ⑦ White LED Spotlight | ⑪ Loudspeaker |
| ④ Microphone | ⑧ Adjusting Screw | ⑫ Charge Indicator |

- | |
|-------------------|
| ⑬ Retaining Screw |
| ⑭ Micro USB Port |

Description of the Camera Network indicators:

Blue light on: The camera is paired or woken up

Red light flashes slowly: Waiting for pairing with NVR

Red and blue lights off: In Standby

Description of the Camera Buttons :

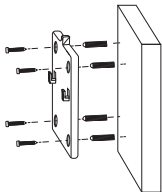
Long press power button for 1 second: Power-on/Power-off

03 / Camera Installation

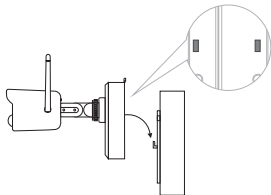
3.1 You can place it on any flat surface: table, chair, floor etc..

3.2 Install with Wall Mount (as shown in the figure)

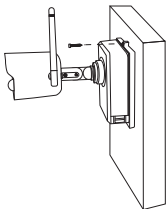
3.2.1 Drill 5 holes according to the position of the mounting base, and mount the base on the wall with the included pack of screws.



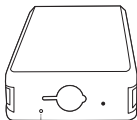
3.2.2 Lock the two slots on the camera base to the hook on mounting base.



3.2.3 Install and tighten the safety set screw.

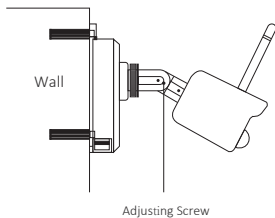


3.2.4 Insert and tighten the screw on the bottom of the camera battery pack.



Screw hole on the bottom of battery pack

3.2.5 Use the included screwdriver to adjust the camera to a proper angle and tighten the adjustment screw.



04 / Installation precautions

1. Please fully charge the camera battery before use.
2. Do not disassemble the device. This product is not equipped with any parts that can be disassembled/maintained by yourself.
3. Do not install at location with objects covering or obscuring the camera.
4. Do not install the camera near the air conditioning outlet, humidifier outlet etc..
5. When installing, avoid directing the camera towards strong light or reflective objects, including sunlight, lights, glass, mirrors and other areas with strong refraction of light sources.
6. Please install at location out of the reach of children.
7. Install the camera at a distance of 55ft. (15m) from moving vehicles.
8. It is recommended to adjust the camera PIR angle to be greater than 10° from detecting objects.
9. Please install the camera at least 3.3ft. (1m) away from wireless devices, including WiFi routers and cell phones, to avoid wireless interference.

Installation Video:

<https://bit.ly/3kjWCzH>



System Operation Video:

<https://bit.ly/30Coqx9>



05 / Pair the Cameras with The NVR

- (1) Place the camera near the NVR at a distance of 30~100cm.
- (2) In the power-on state, press and hold the reset button of the camera for 3-5 seconds, after hearing a voice prompt from the camera, open the NVR system interface and use the camera to scan the QR code (Phone port number) for pairing. After that, the camera will give out a voice prompt to indicate that pairing success.

